

Quick Tour



XFMEA



RCM++

VERSION 2025

ReliaSoft

© 1992-2025 Hottinger Bruel & Kjaer UK Ltd ("HBK UK Ltd"), at Technology Centre, Advanced Manufacturing Park, Brunel Way, Catcliffe, Rotherham S60 5WG. HBK UK Ltd is an affiliate of Hottinger Bruel & Kjaer Inc. ALL RIGHTS RESERVED.

This license agreement ("License Agreement") sets forth the terms and conditions that govern the distribution and use of the HBK UK Ltd software documentation (the "HBK Software Documentation"), including any and all derivative works. Any unauthorized distribution or use of the HBK Software Documentation is strictly prohibited.

Licensee hereby acknowledges and agrees to the following terms and conditions of this License Agreement for its use of the HBK Software Documentation:

HBK UK Ltd grants the Licensee who accepts and abides by the terms of this License Agreement a non-exclusive, non-transferable, royalty-free, and revocable license to the HBK Software Documentation. Unless otherwise indicated, all HBK Software Documentation are copyrighted and are the property of HBK UK Ltd or, where applicable, the relevant member of HBK UK Ltd's corporate group. They are licensed to you and for your use only as an individual who has purchased the software ("Licensee"). Notwithstanding this License Agreement, the Licensee shall not have a license to the trademarks, logos, or any other intellectual property of HBK UK Ltd and/or its affiliates or Licensor(s).

Licensee may print a single copy of the HBK Software Documentation for his/her reference. Licensee may reprint the HBK Software Documentation, as needed, if the original printed copy is damaged and/or destroyed.

Except as provided above, no part of the HBK Software Documentation, either text or image, may be used for any purpose other than Licensee's own personal use and reference as a learning aid. Therefore, the reproduction, modification, creation of derivative works, storage in a retrieval system, or retransmission, in any form or by any means, electronic, mechanical or otherwise, for reasons other than Licensee's personal use, is strictly prohibited.

Certain photos and images in the HBK Software Documentation are used under non-transferable licenses obtained by HBK UK Ltd and/or its affiliates and are owned by its Licensor(s) ("Licensor"). Images depicting photos of actual persons are licensed to HBK UK Ltd and/or its affiliates and the signed model releases for these images are on file with the Licensor(s). HBK UK Ltd makes no copyright claims on these images. All ownership and intellectual property rights to the HBK Software Documentation are reserved by either HBK UK Ltd and/or its affiliates or its Licensor(s).

DISCLAIMER: THE HBK SOFTWARE DOCUMENTATION IS PROVIDED "AS IS" WITHOUT WARRANTIES OF ANY KIND, EITHER EXPRESS OR IMPLIED,

INCLUDING, BUT NOT LIMITED TO: 1) ANY IMPLIED WARRANTIES OF MERCHANTABILITY, FITNESS FOR A PARTICULAR PURPOSE, OR NON-INFRINGEMENT OF INTELLECTUAL PROPERTY; 2) ANY WARRANTY THAT THE HBK COURSE MATERIALS WILL CONFORM TO SPECIFICATIONS; 3) ANY WARRANTY THAT THE WORK WILL BE ERROR FREE OR VIRUS FREE. IN NO EVENT SHALL HBK UK LTD, ITS AFFILIATES, DISTRIBUTORS, CONTRACTORS, AGENTS, AND ITS LICENSOR(S) BE LIABLE FOR ANY DAMAGES, INCLUDING, BUT NOT LIMITED TO, DIRECT, INDIRECT, SPECIAL OR CONSEQUENTIAL DAMAGES, ARISING OUT OF, RESULTING FROM, OR IN ANY WAY CONNECTED WITH THE HBK SOFTWARE DOCUMENTATION, WHETHER OR NOT BASED UPON WARRANTY, CONTRACT, TORT, OR OTHERWISE, WHETHER OR NOT LOSS WAS SUSTAINED FROM, OR AROSE OUT OF THE RESULTS OF, OR USE OF, THE HBK SOFTWARE DOCUMENTATION. LICENSEES AGREE TO WAIVE ANY AND ALL CLAIMS AGAINST HBK UK LTD, ITS AFFILIATES, DISTRIBUTORS, CONTRACTORS, AGENTS, AND ITS LICENSOR(S), AND SHALL INDEMNIFY, DEFEND AND HOLD HARMLESS HBK UK LTD, ITS AFFILIATES, DISTRIBUTORS, CONTRACTORS, AGENTS, AND ITS LICENSOR(S) FOR ANY AND ALL LIABILITIES, CLAIMS, DEMANDS, DAMAGES, EXPENSES OR LOSSES THAT MAY ARISE FROM THE LICENSEE'S USE OR DISTRIBUTION OF THE HBK SOFTWARE DOCUMENTATION, INCLUDING ANY LIABILITIES OR DAMAGES FROM DERIVATIVE WORKS OR OTHER PRODUCTS BASED ON, OR RESULTING FROM, THE USE THEREOF.

This License Agreement is subject to change without notice and does not represent any commitment on the part of HBK UK Ltd and/or its affiliates to the Licensee, including any commitment to maintain or update the HBK Software Documentation. The names of companies, products, people, characters, and/or data mentioned in the HBK Software Documentation are not intended to represent any real individual, company, product or event, unless otherwise noted. Any rights not expressly granted herein are reserved for HBK UK Ltd.

TRADEMARKS:

ReliaSoft, Weibull++, BlockSim, Lambda Predict, XFMEA, RCM++ and XFRACAS are all trademarks of Hottinger Bruel & Kjaer Inc.

GlyphWorks, VibeSys, DesignLife and the nCode logos are all trademarks of HBK UK Ltd.

Other product names and services identified in the HBK Software Documentation are trademarks belonging to their respective trademark holders, and are used for illustration purposes. Their use in no way conveys an endorsement or other affiliation with HBK UK Ltd and/or its affiliates.

This License Agreement is subject to change without notice and does not represent any commitment on the part of HBK UK Ltd and/or its affiliates to the Licensee, including any commitment to maintain or update the HBK Software Documentation. The names of companies, products, people, characters, and/or data mentioned in the HBK Software Documentation are not intended to represent any real individual, company, product or event, unless otherwise noted. Any rights not expressly granted herein are reserved for HBK UK Ltd.

Quick Tour of XFMEA and RCM++

XFMEA facilitates data management and reporting for all types of **FMEA** (including Design FMEA, Process FMEA, FMECA, etc.). It also supports related analyses such as **P-Diagrams**, **DVP&Rs (Test Plans)**, **Design Reviews Based on Failure Mode (DRBFMs)**, **Process Flow Diagrams** and **Process Control Plans**.

RCM++ facilitates the **Reliability Centered Maintenance (RCM)** approach for creating effective scheduled maintenance plans. It supports traditional RCM decision logic diagrams, and also offers simulation/calculation engines to compare maintenance strategies based on cost and availability.

Answer a wide variety of questions such as:

- What is the risk in a product or process?
- Which components or assemblies pose the greatest risk?
- What failure modes might occur? What is the effect of failure?
- What controls are in place to mitigate the risk?
- What tests need to be performed?
- How can we improve the design?
- How should we plan for scheduled inspections and maintenance?

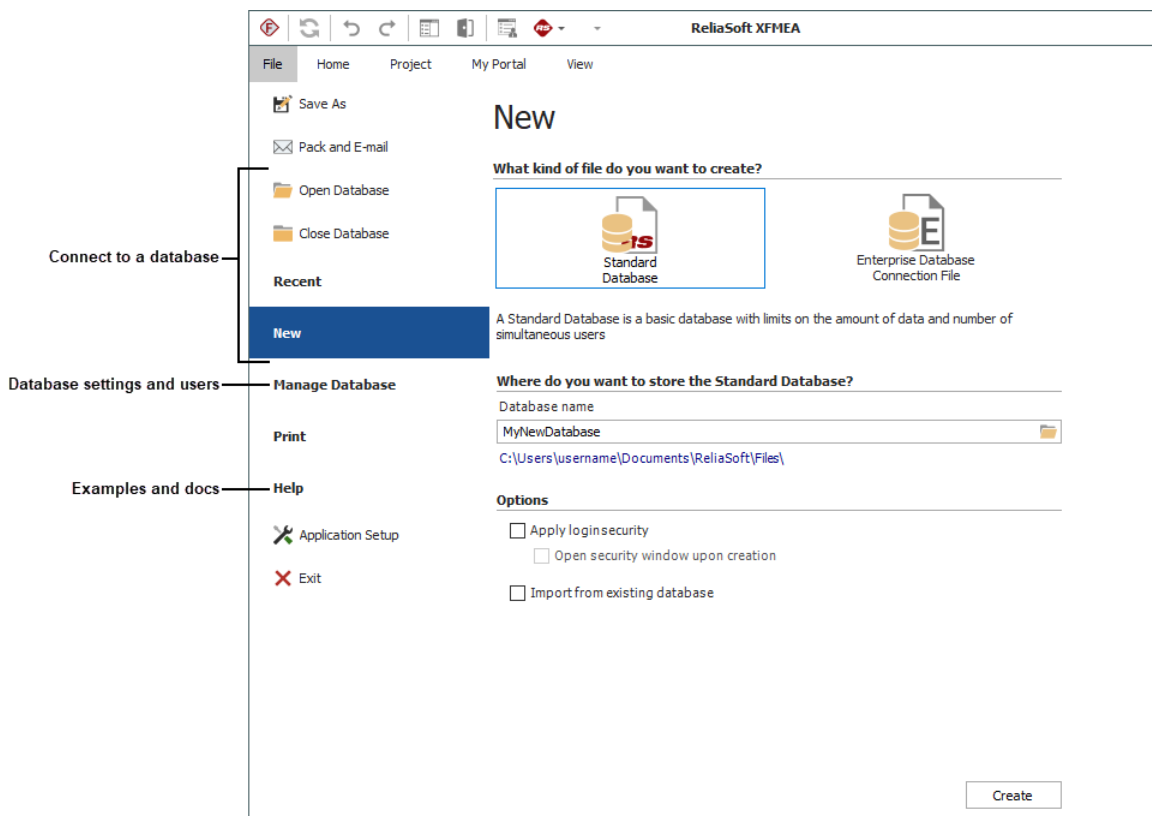
Using Databases and Projects

File Menu

Use commands on the **File** menu (**New**, **Recent** or **Open Database**) to create or open a database.

Each database supports simultaneous access by multiple users. If you have admin permissions, use **File > Manage Database** to control user access and manage configurable settings that apply throughout the database.

Use **File > Help** to access online help and shipped examples.

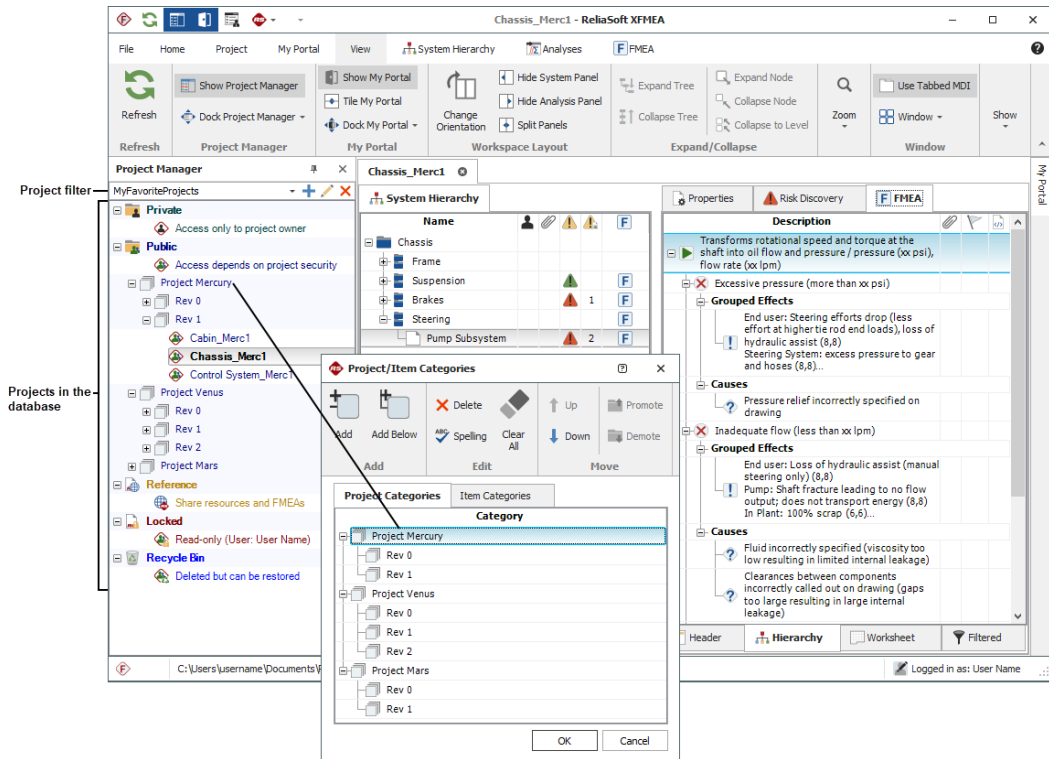


Project List

Each database can contain multiple projects. Use the **project list** to create or open a project.

If you have a lot of projects:

- Use the **project filter** to limit what's displayed.
- Use the **project category** to group projects within the list.



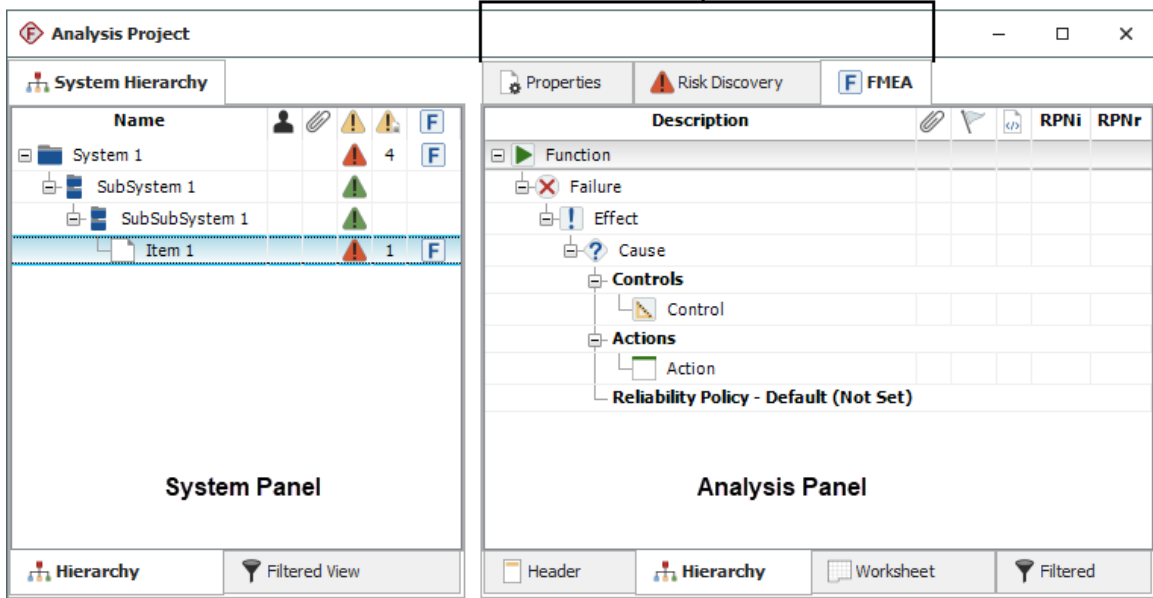
System Panel and Analysis Panel

The **System panel** shows the items that may be analyzed in the project.

- It can be a single item or a complex multi-level system configuration.
- It can be physical components/equipment or steps in a process.

The **Analysis panel** shows properties and analyses for the item that is currently selected.

These tabs allow you to view different analyses for the item that is currently selected.



Common features such as **resources** and **project attachments** are visible in all ReliaSoft desktop applications.

Project Properties

FMEA Structure

Each project has an **FMEA structure** that will be the same for all FMEAs and RCMs in the project.

- **Grouped Effects and Causes** (commonly used for FMEA)

The effects will be entered as separate records but displayed together in the FMEA; the software calculates RPNs based on the highest severity rating.

Description	SEVi	OCCi	DETi	RPNi
Function				
Failure Mode A				
Grouped Effects				
Effect 1 (2,-) Effect 2 (8,-)	8			
Causes				
Cause 1		5	5	200
Cause 2		5	5	200
Cause 3		5	5	200

- **Effects Before Causes** (can be used for FMEA or RCM)

Description	SEVi	OCCi	DETi	RPNi
Function				
Failure Mode A				
Effect 1	8			
Cause 1		5	5	200
Cause 2		5	5	200
Cause 3		5	5	200

- **Causes Before Effects** (sometimes used for RCM)

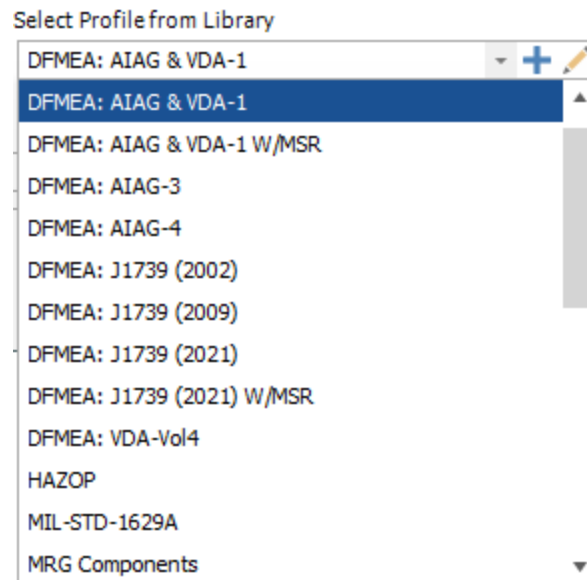
Description
Function
Functional Failure
Failure Mode
Effect

Configurable Settings

Each project also has its own **configurable settings** that enable you to customize:

- Data fields and names
- Classifications, categories and other drop-down lists
- Rating scales and preferences for FMEA risk priority metrics
- Logic for risk discovery and RCM decision charts

Use the **Select Profile from Library** option in the project properties to quickly apply a pre-defined group of settings.



Using FMEAs

Failure Modes and Effects Analysis (FMEA) and Failure Modes, Effects and Criticality Analysis (FMECA) are methodologies designed to identify potential failure modes for a product or process, to assess the risk associated with those failure modes, to rank the issues in terms of importance and to identify and carry out corrective actions to address the most serious concerns.

The basic steps for using an FMEA are:

1. Create the project and set project properties

Choose **Project > Management > Create Project**.

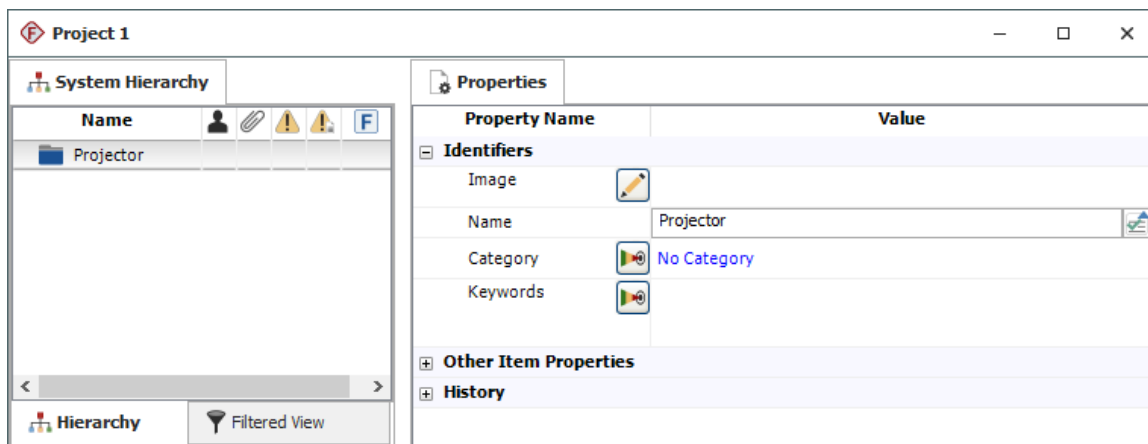


In the Project Properties window, specify the **FMEA Structure** and the **Profile** that will be used to set the configurable settings.

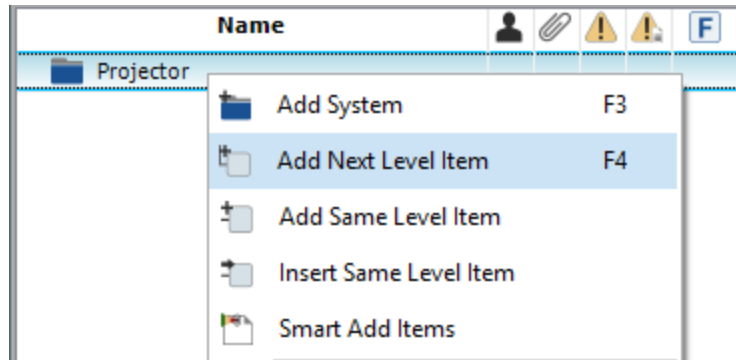
FMEA Structure	Select Profile from Library
Grouped Effects and Causes	DFMEA: AIAG-4

2. Add items in the system hierarchy

The first item is added to the system hierarchy when you create the project. Use the Properties tab in the Analysis panel to rename it and set other properties.

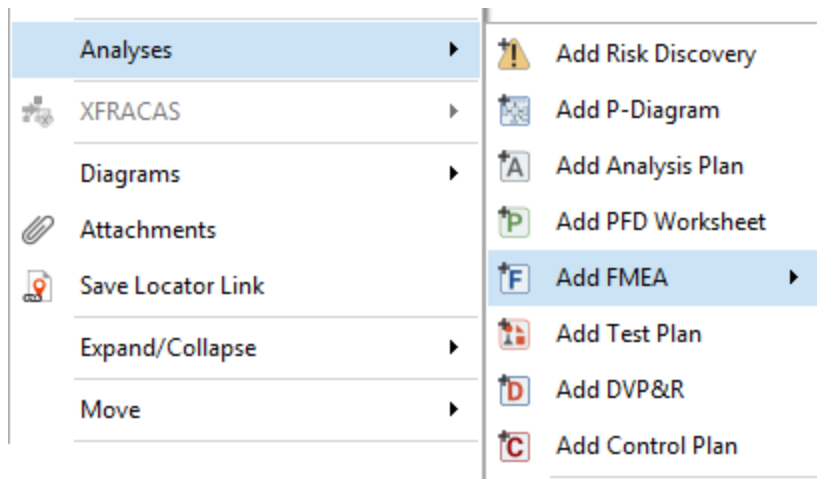


To add items, right-click inside the system hierarchy and choose **Add System**, **Add Next Level Item**, etc.



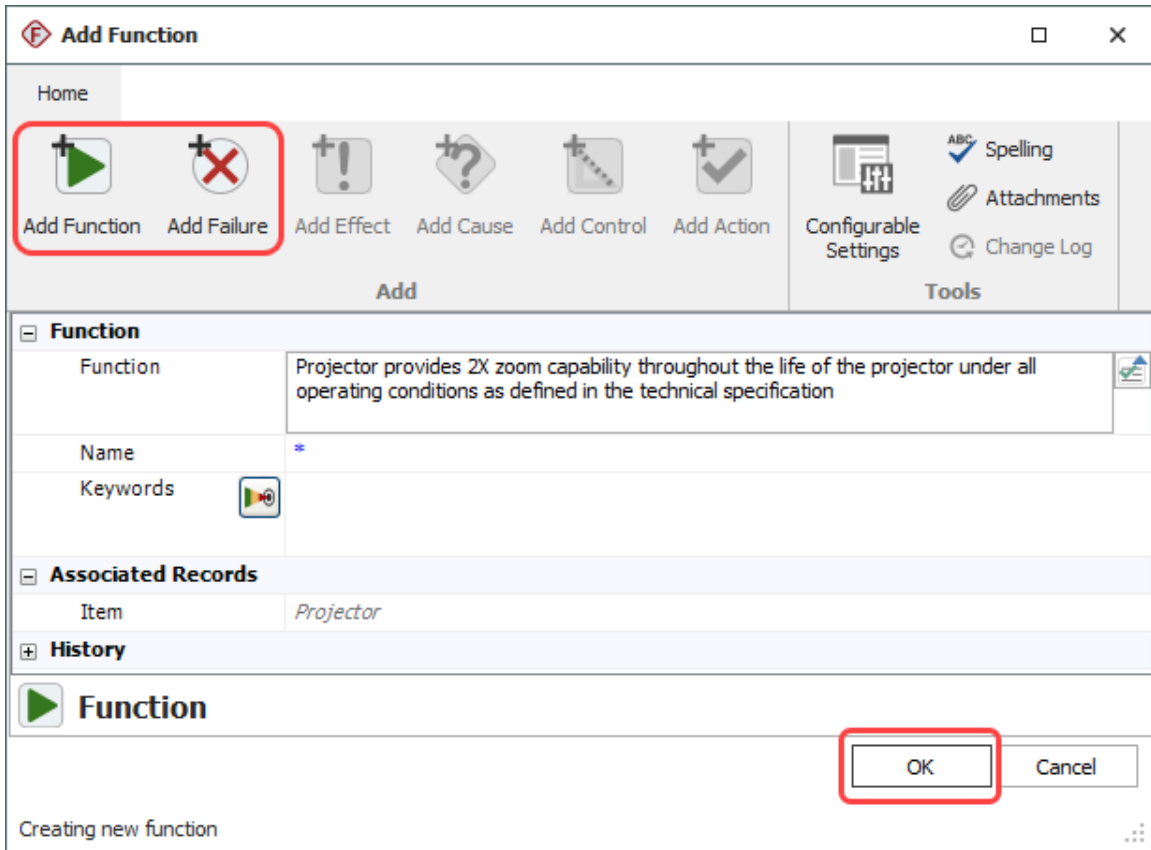
3. Add a new FMEA

To add an FMEA for an item, right-click the item in the system hierarchy and choose **Analyses > Add FMEA**.



4. Add records in the FMEA hierarchy

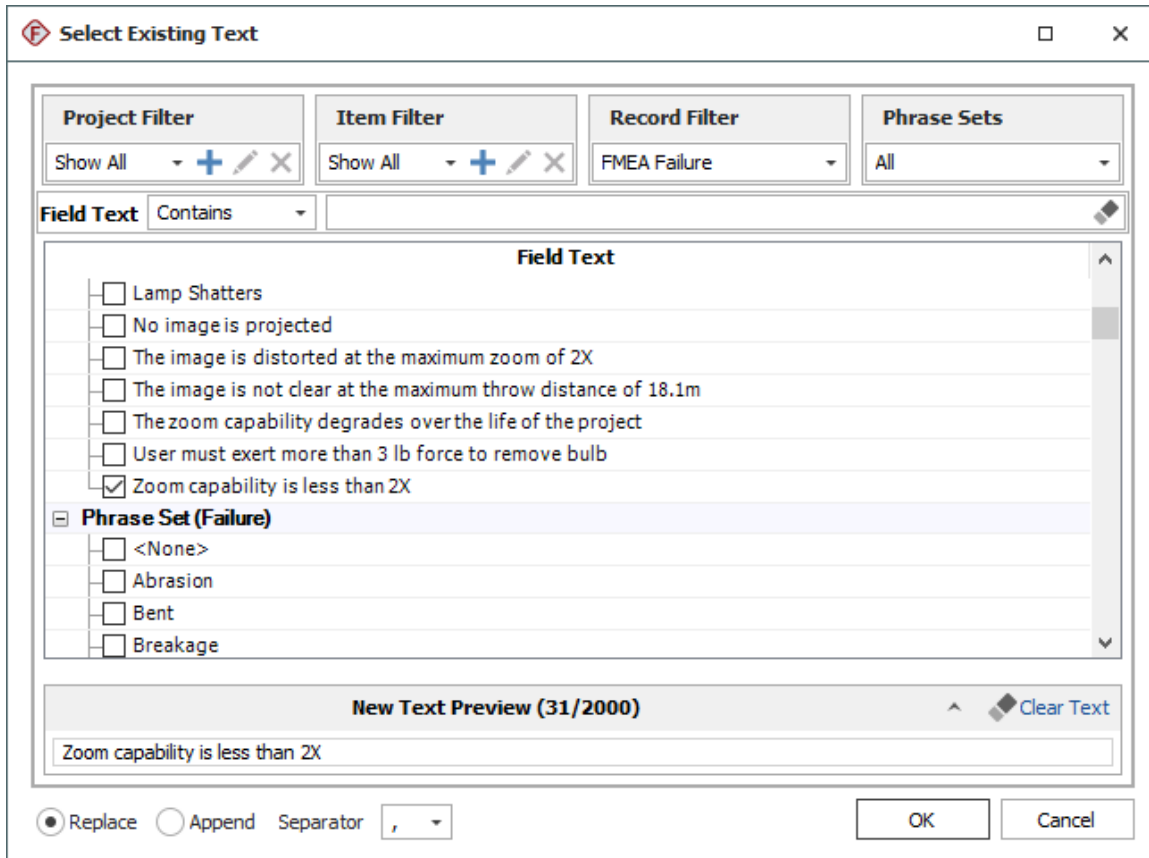
The Hierarchy tab for an FMEA displays the analysis records in a hierarchical tree, which tends to be good for viewing a lot of information in a small amount of space. In this view, you will use properties windows to add or edit FMEA records. When you add a new FMEA, the Function window will automatically open. Enter the details and click either **Add Function** (to add the next function description), **Add Failure** (to add the first failure mode for this function) or **OK** (to close the window).



5. Use Select Existing Text utilities

The Select Existing Text window provides a list of existing descriptions that might apply to the current text field or analysis. If you want to use this utility to replace or append text in an input field, click the icon next to the field.





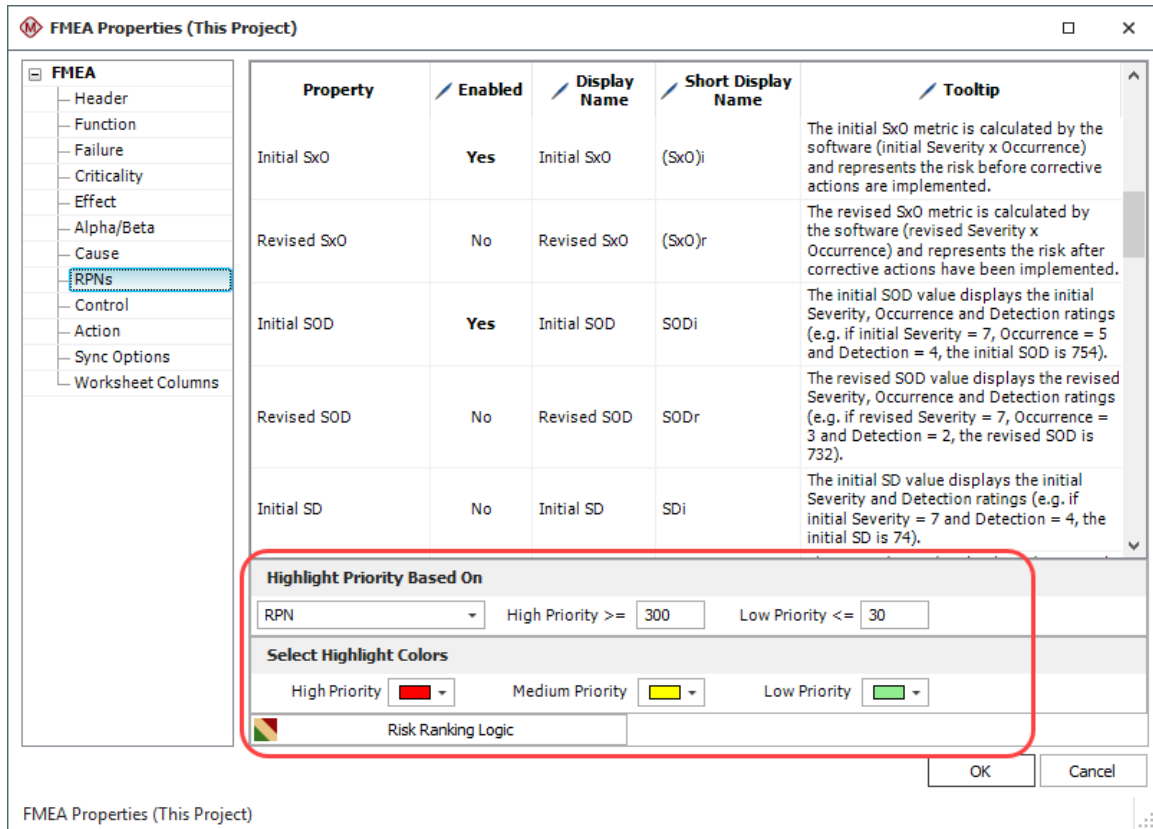
The Select Existing Text window can also be used to add multiple records at once. For example, right-click a function record and choose **Add Multiple Failures > Select Existing Text**.

6. View RPNs and related metrics

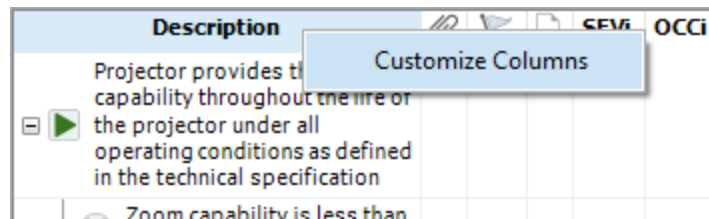
You can choose to calculate and display a variety of metrics based on the Severity, Occurrence and Detection ratings that have been assigned for effects and causes in the FMEA: RPN, SxO, SOD, SD or QCPN. To configure the metrics that are enabled for the current project, choose **FMEA > Tools > Configurable Settings**.



On the RPNs page, use the Enabled column to specify which metrics will be available in the current project. Use the **Highlight Priority Based On** area to configure the logic that will be employed when a user turns on the priority highlights feature.



To choose which metrics will be displayed in the FMEA hierarchy for your computer, right-click a column heading in the FMEA and choose **Customize Columns**.



To turn on priority highlighting, choose **FMEA > Tools > Highlight Priority**.



7. Use the filtered and worksheet views

a. Filtered view

Click the Filtered tab at the bottom of the FMEA to open the filtered view. This view presents a sortable list of all records of a particular type, such as causes sorted by RPN or

actions sorted by due date. Use the **Filter By** drop-down list to select which records are displayed. Then click inside the column heading you wish to sort by.

	Recommended Action(s)	Action Status	Priority	Planned Start Date
1	<input checked="" type="checkbox"/> Conduct a customer maintenance assessment	Completed - Late	Medium	9/16/2019
2	<input type="checkbox"/> Develop DFMEA with Lamp Supplier	Past Start Date	Medium	9/16/2019
3	<input checked="" type="checkbox"/> Conduct a customer maintenance assessment	Completed - On Time	Medium	9/18/2019
4	<input type="checkbox"/> Develop Projector evaluation method to include shock/vibration	Past Due	Medium	9/20/2019
5	<input type="checkbox"/> Develop a test procedure to access the cleanability of filters	Not Started	Medium	11/29/2019

b. FMEA worksheet

Click the Worksheet tab at the bottom of the FMEA to open the worksheet view. This view allows you to type directly into the worksheet cells and tab through the analysis as you would in a spreadsheet application.

Properties		FMEA			
Function	Potential Failure Mode	Potential Effect(s) of Failure	SEVi	Classification	
1	Projector provides the 2X zoom capability throughout the life of the projector under all operating conditions as defined in the technical specification	Zoom capability is less than 2X	Unable to enlarge image to required specification. Image is too small for close-up projection. (7,-)	7	
2					
3		The image is distorted at the maximum zoom of 2X	Image is unclear, difficult to read printed words (7,-)	7	
4					
5		The zoom capability degrades over the life of the project	Unable to enlarge image to required specification. Image is too small for close-up projection. (7,-)	7	

Function 0 Attachments

Header Hierarchy **Worksheet** Filtered

To use the entire workspace for the worksheet view, choose **View > Workspace Layout > Hide System Panel**.



To return to a split workspace, choose **View > Workspace Layout > Split Panels**.

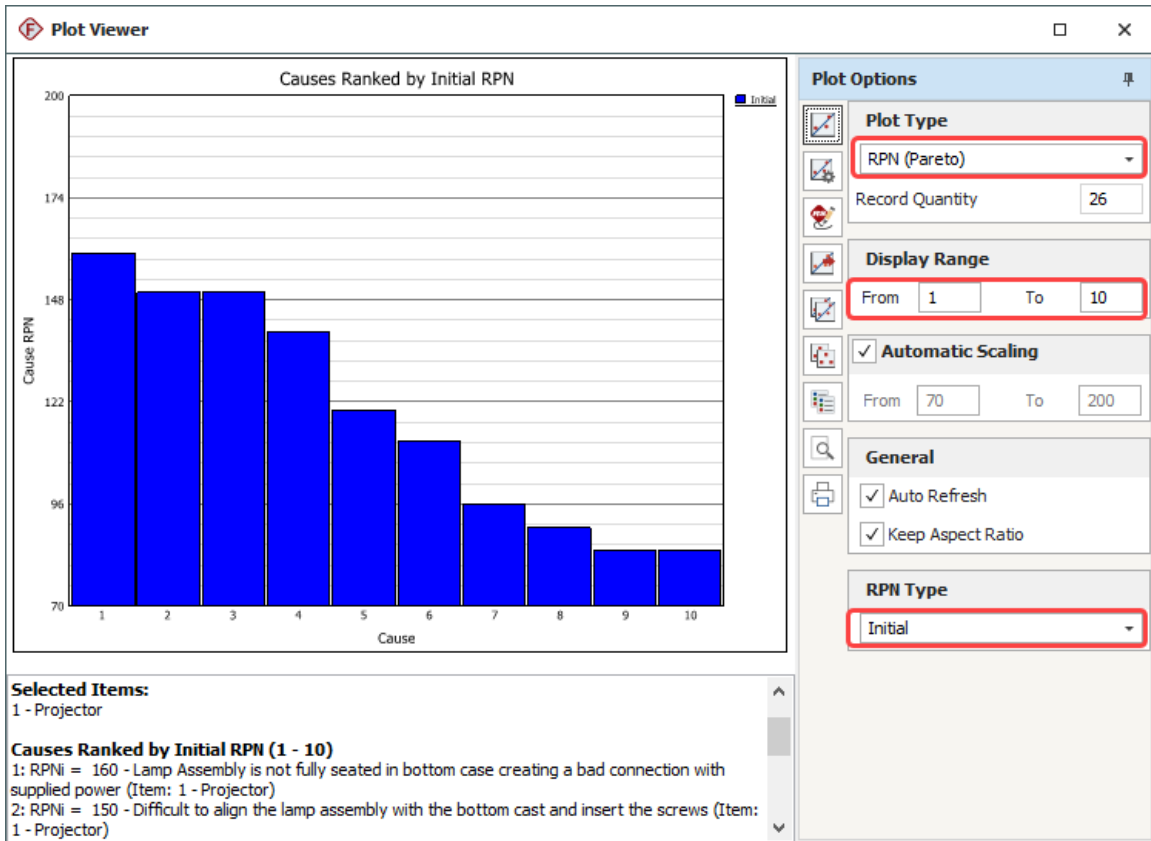


8. Create plots

Choose **Home > Reporting > Plots**.



Select the item(s) that you want to include in the plot. Then use the control panel to select the plot type and other settings.



9. Run a query

Choose **Home > Reporting > Queries**.



First use the left panel to specify the data source (selected projects throughout the database or selected items within the current project). Then use the right panel to specify the query criteria and output preferences.

Select the type of record you wish to query

Query

FMEA Causes Show Project Show Priority Colors

Criteria Headers Customization Results

Match the criteria from: All rows Any row

Property Name	Include in Results	Criterion 1	And/Or	Criterion 2
Initial RPN	<input checked="" type="checkbox"/>	is greater than or equal to 100	AND	is less than or equal to
Revised RPN	<input type="checkbox"/>	is greater than or equal to	AND	is less than or equal to
% Reduction in Cause RPN	<input type="checkbox"/>			
Initial SxO	<input type="checkbox"/>	is greater than or equal to	AND	is less than or equal to
Initial SOD	<input type="checkbox"/>			
URD (Cause)	<input type="checkbox"/>	Contains	OR	Contains
Reliability model (Cause)	<input type="checkbox"/>			
Target Reliability (Cause)	<input type="checkbox"/>	is greater than or equal to	AND	is less than or equal to
Current Reliability (Cause)	<input type="checkbox"/>			
Probability of Failure (Cause)	<input type="checkbox"/>			
Has Actions	<input type="checkbox"/>	is	AND	is
Has Controls	<input type="checkbox"/>	is	AND	is
Created By	<input type="checkbox"/>	is	OR	is
Date Created	<input type="checkbox"/>	is greater than or equal to	AND	is less than or equal to
Last Updated By	<input type="checkbox"/>	is	OR	is
Last Updated	<input type="checkbox"/>	is greater than or equal to	AND	is less than or equal to
Effects Properties	<input type="checkbox"/>			
Effect ID	<input type="checkbox"/>	is greater than or equal to	AND	is less than or equal to
Effect #	<input type="checkbox"/>	is greater than or equal to	AND	is less than or equal to
Potential Effect(s) of Failure	<input type="checkbox"/>	Contains	OR	Contains
Name (Effect)	<input type="checkbox"/>	Contains	OR	Contains
Keywords (Effect)	<input type="checkbox"/>	Contains	OR	Contains
Initial Severity	<input checked="" type="checkbox"/>	is greater than or equal to 8 - Loss of Primary Function	AND	is less than or equal to

Select which columns to display in the results

Specify criteria to limit the query results

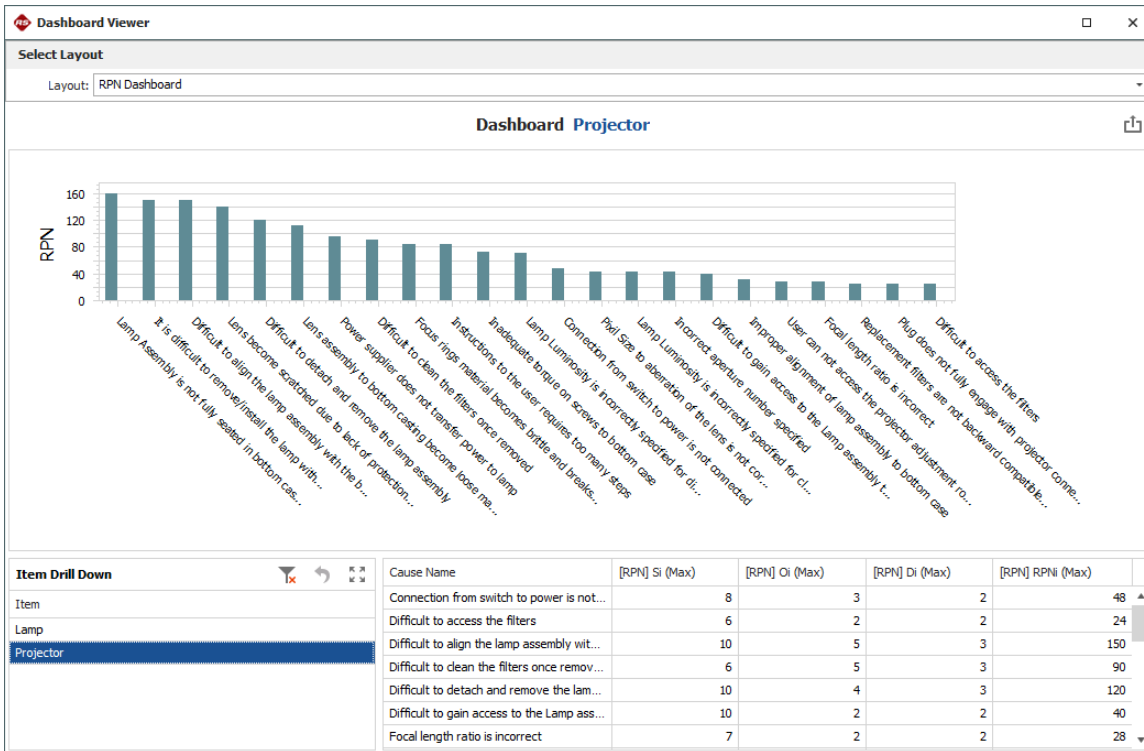
Click **Run Query** to view the records that match the criteria.

10. View a dashboard

Choose **Home > Reporting > Dashboard > Dashboard Viewer**.



In the **Layout** drop-down list, select one of the layouts that have been predefined for FMEA data and then use the dashboard to view the desired information. For example, in the RPN Dashboard you can click an item in the **Item Drill Down** panel to select which item's data will be displayed in the other 2 panels.

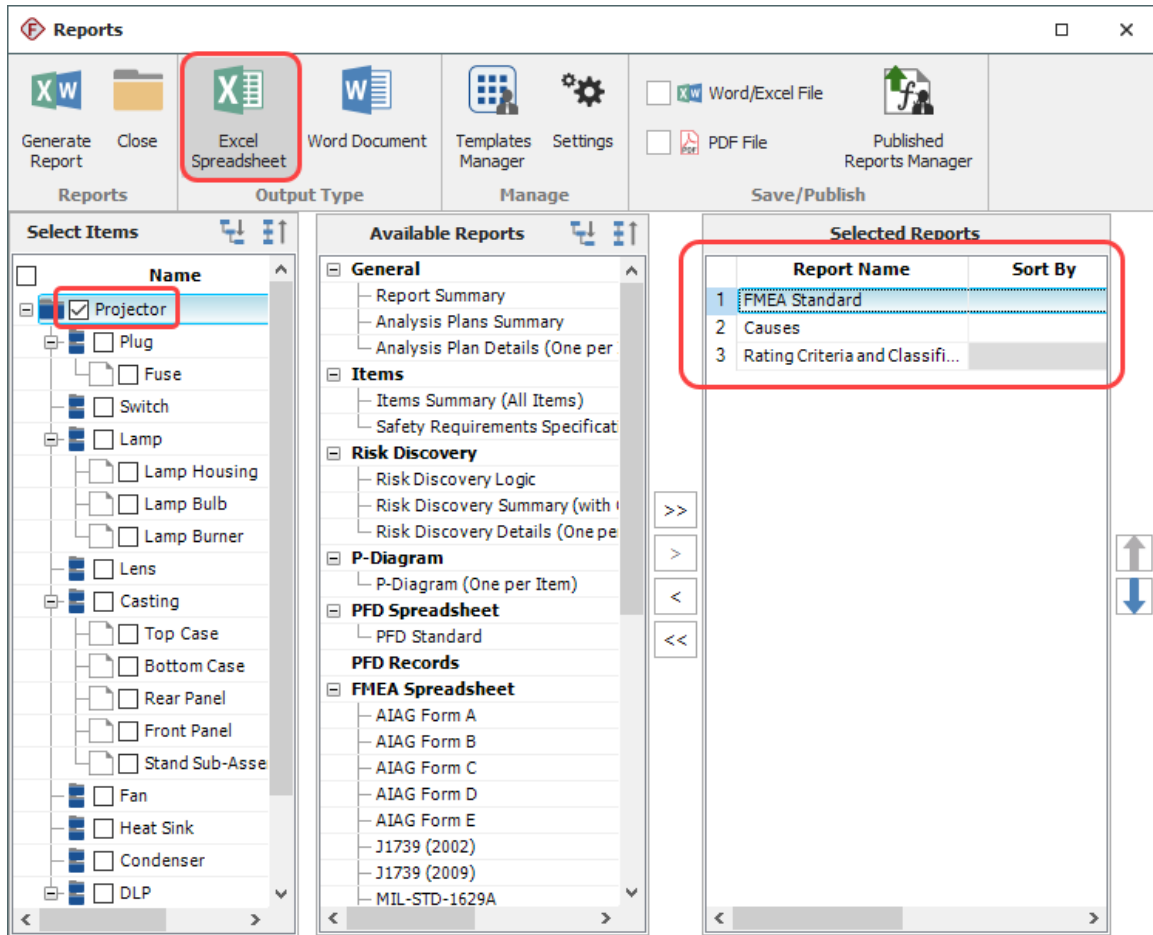


11. Generate a report

Choose **Home > Reporting > Reports.**



Select the items that you want to create a report for, the report forms you want to include in the generated report and the desired output type (Excel or Word).



Click **Generate Report** to create the report.

Using RCMs

Reliability Centered Maintenance (RCM) analysis provides a structured framework for analyzing the functions and potential failures for a physical asset in order to develop a scheduled maintenance plan that will provide an acceptable level of operability, with an acceptable level of risk, in an efficient and cost effective manner.

The basic steps for performing RCM analysis are:

1. Create the project and set project properties

Choose **Project > Management > Create Project**.

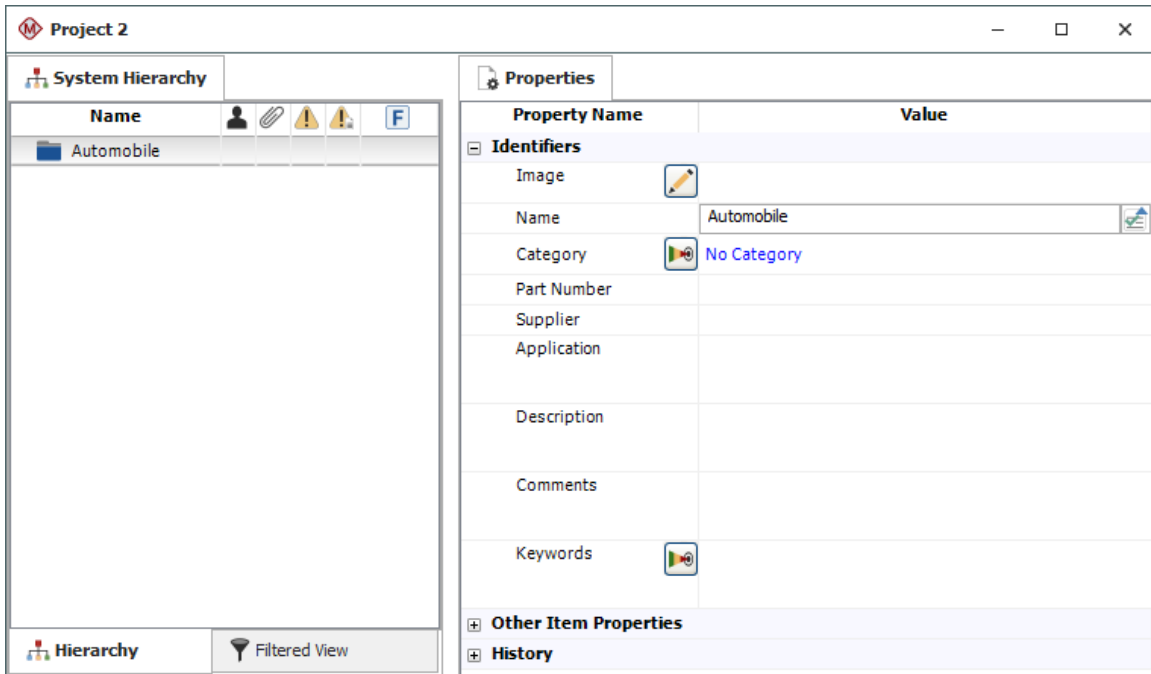


In the Project Properties window, specify the **FMEA Structure** and the **Profile** that will be used to set the configurable settings.

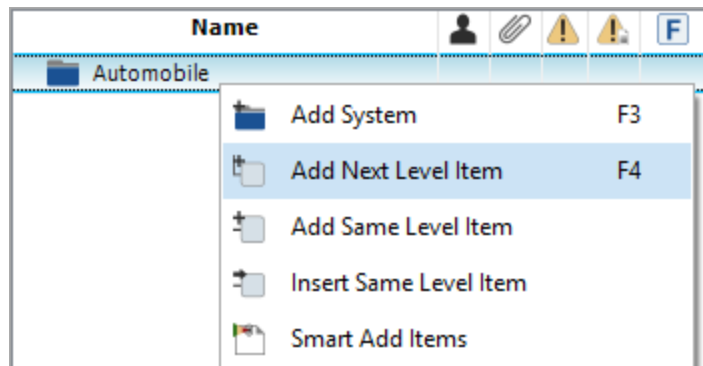
FMEA Structure	Select Profile from Library
Effects Before Causes	Standard RCM

2. Add items in the system hierarchy

The first item is added to the system hierarchy when you create the project. Use the Properties tab in the Analysis panel to rename it and set other properties.

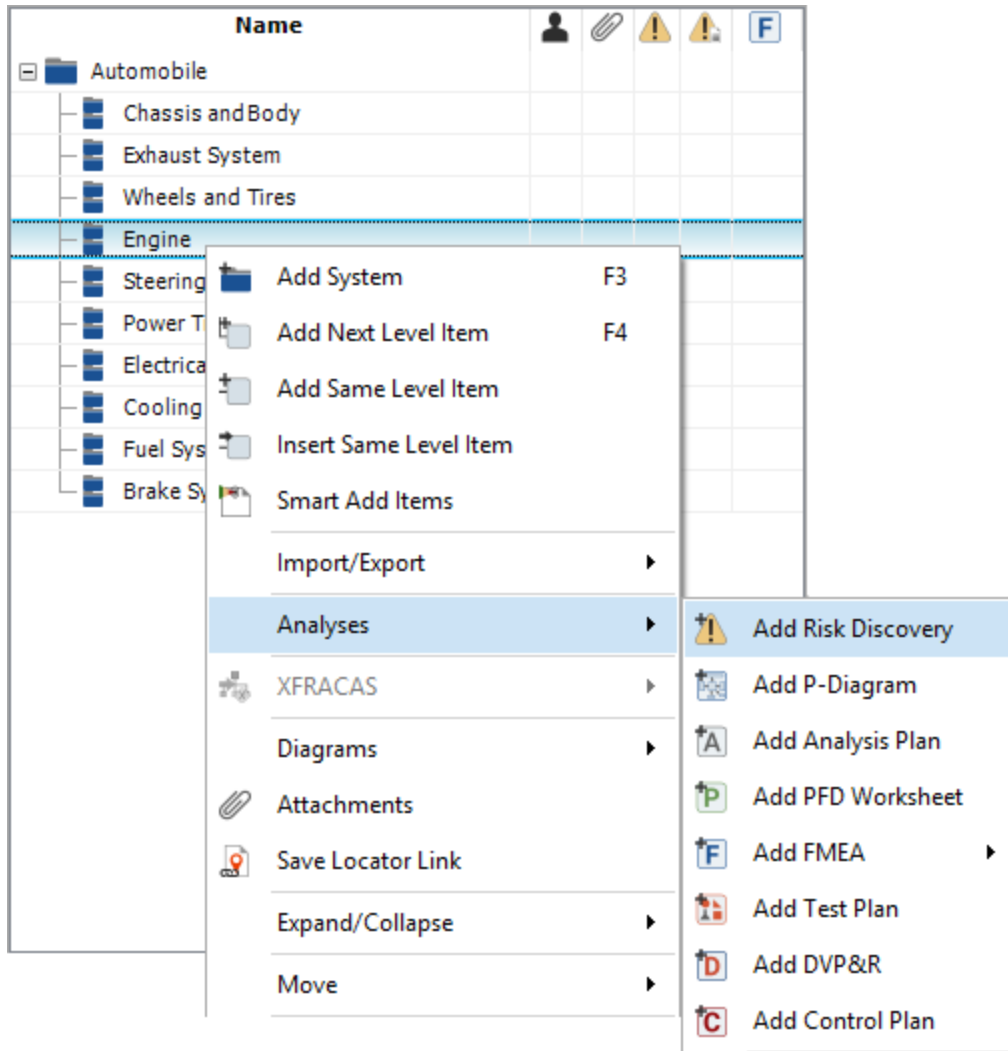


To add items, right-click inside the system hierarchy and choose **Add System**, **Add Next Level Item**, etc.



3. Perform equipment selection

For each system hierarchy item that you want to perform equipment selection for, right-click the item and choose **Analyses > Add Risk Discovery**.



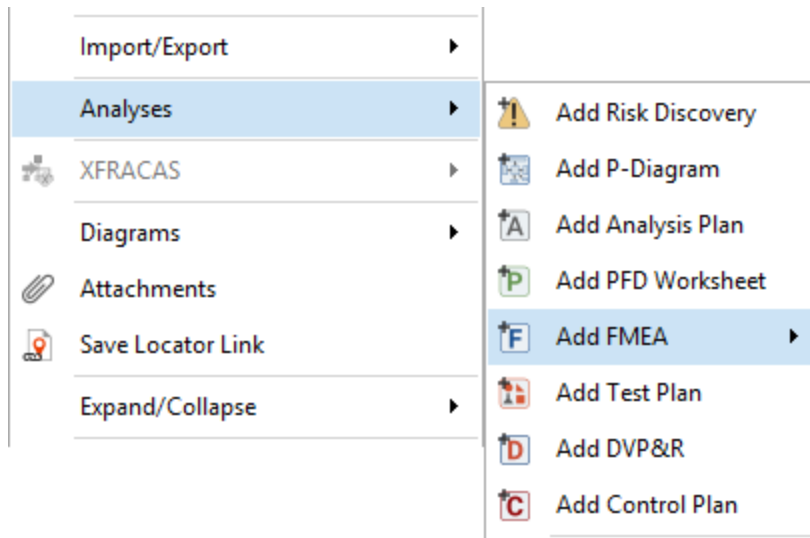
Depending on the configurable settings for the project, this can be a list of yes/no questions or a set of rating scales.

Properties		Risk Discovery	
Label	Question	Response	Comments
Safety	Could failure affect safety or have other hazardous consequences?	Yes	
Detectability	Could failure be undetectable or not likely to be detected during normal operation?	No	
Operational	Could failure have significant operational impact?	Yes	
Economic	Could failure have significant economic impact?	Yes	

Mark item for more detailed analysis

4. Add a new functional failure analysis

Right-click the system hierarchy item that you want to create a functional failure analysis for and choose **Analyses > Add FMEA**.



5. Add functional failure analysis records

When you add the analysis, the Function window will automatically open. Enter the details and click either **Add Function** (to add the next function description), **Add Failure** (to add the first functional failure for this function) or **OK** (to close the window).

Add Function

Home

Add Function Add Failure Add Effect Add Cause Configurable Settings Spelling Attachments Change Log

Function

Function	To use internal combustion to rotate the crankshaft and camshaft, thereby providing power to the vehicle.
Name	*
Keywords	

Associated Records

Item	Engine
------	--------

History

Function

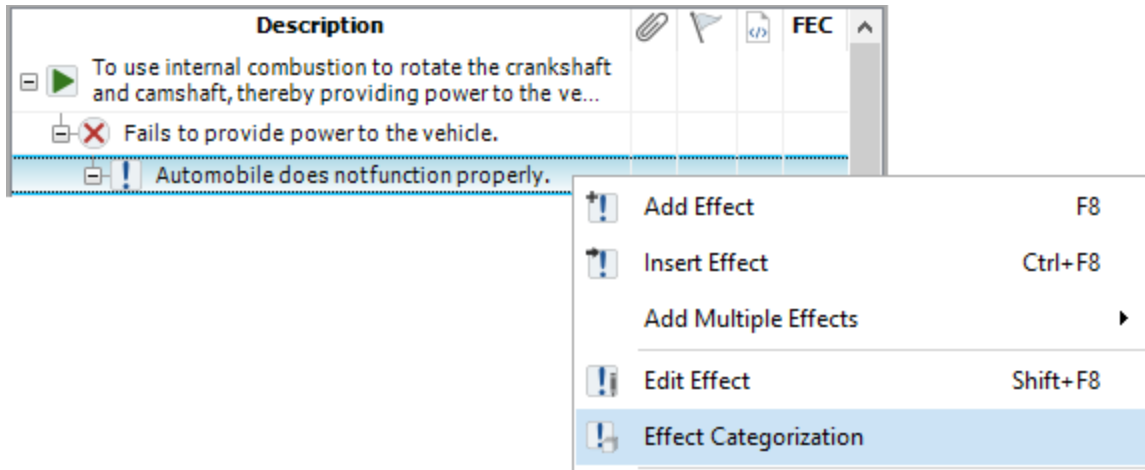
OK Cancel

Creating new function

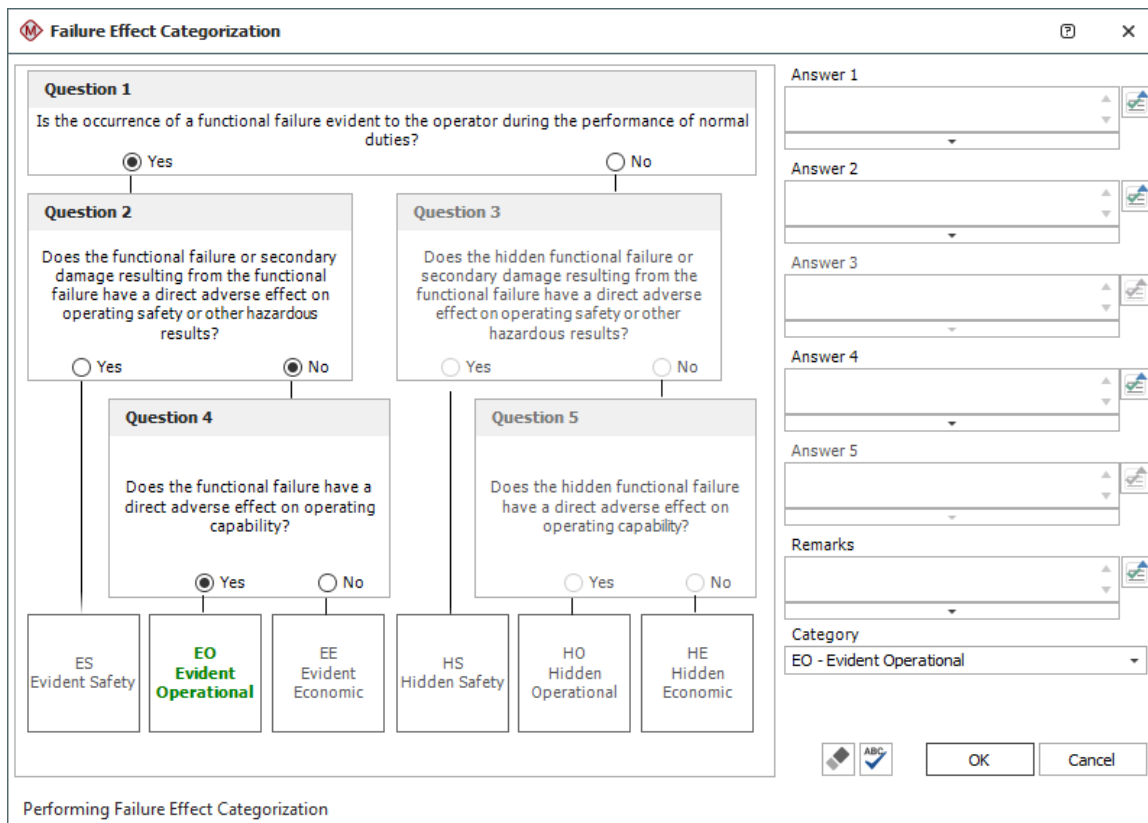
Continue adding analysis records as needed. Note that RCM failure modes are described using the cause record type.

6. Perform failure effect categorization

Right-click an effect in the functional failure analysis and choose **Effect Categorization**.



The questions and categories depend on the configurable settings for the project.



7. Perform maintenance task selection and add a task

Right-click a failure mode (cause) and choose **Task Manager**.

Description		FEC
	To use internal combustion to rotate the crankshaft and camshaft, thereby providing power to the ve...	
	✗ Fails to provide power to the vehicle.	
	! Automobile does notfunction properly.	E0
	? Engine oil is depleted or dirty; oil filter is dirty.	
	? Engine air filter is damaged.	
	? Problem with spark plugs.	
	? Problem with engine valve clearance.	
	? Problem with the timing belt.	

	Add Cause	F9
	Insert Cause	Ctrl+F9
	Add Multiple Causes	▶
	Edit Cause	Shift+F9
	Task Manager	

In the Task Manager, answer the questions by clicking inside the Yes/No column. These questions may or may not be dependent on the failure effect categorization, depending on the task selection logic defined for the project.

Task Manager
□ ×

Add Task	Add Existing Tasks	Edit Task	Delete Task	Edit URD	Edit Model	Edit Corrective Task	Effect Categorization	Simulate
Tasks				Related Records			Tools	

FEC: EO - Evident Operational

Question	Yes/No	Explanation
1: Is a scheduled service task (such as lubrication) applicable and effective?	No	
2: Is a scheduled on-condition inspection task applicable and effective?	No	
3: Is a scheduled repair/replacement task applicable and effective?	Yes	
4: Is an up-front one-time task (such as re-design) applicable and effective?	No	

Run to Failure: Cost per Operating Time (\$/hr) Availability

Tasks

Name	Type	Operating Cost	Cost per Operating Time (\$/hr)	Availability

Task Manager
⋮

To add a task, click **Add Task**.



- Specify the task name and task type, then indicate when the task is to be performed.

Maintenance Task

Task Name
Change oil and check oil filter

Task Type
Service (S)

Task Properties

- Task Scheduling**
 - When is this task performed? Fixed time frame based on calendar time
 - Fixed interval 3
 - Unit Month (mon)
 - Override task scheduling properties with a task package
- Basic Task Properties**
- Task Consequences**
- Restoration**
- Additional Costs to Consider**
- RCM**

OK Cancel

Creating new scheduled task

- Continue to specify task properties as needed. The configurable fields for traditional RCM are entered under the **RCM** node.

Maintenance Task [] [X]

Task Name
Change oil and check oil filter

Task Type
Service (S)

Task Properties

- + [] Task Scheduling
- + [] Basic Task Properties
- + [] Task Consequences
- + [] Restoration
- + [] Additional Costs to Consider
- [M] RCM

Status	Recommended
Proposed Interval	3 (mon)
Reference Document	
Condition	
Zone	
Access	

[] [] []

OK Cancel

Creating new scheduled task ...

More Analyses and Tools

Analysis Plans

Analysis Plans allow you to keep track of team members, ground rules, estimated completion dates, scheduled work sessions and other details that will help you to plan and manage your FMEA and RCM projects.

1 - Projector: Analysis Plan
□ ×

Name

Description

In Progress

Planned Start Date

Actual Start Date

Due Date

Completion Date

Team

Analysis Checklist

Ground Rules and Assumptions

Conditions of Use

Work Sessions

Quality Survey

Ground Rules and Assumptions

Assume that parts are made to print

Assume that parts are properly assembled

Assumptions about how the Projector will age:

- Buttons on the user interface become harder to press
- Computer connection loosens
- Dust builds up inside projector
- Plastics become brittle as they age

Assumptions about use conditions:

- Extended use - up to 12 hours
- May be suspended from the ceiling

Delete Row

Insert Row

Move Up

Move Down

Select Existing Text

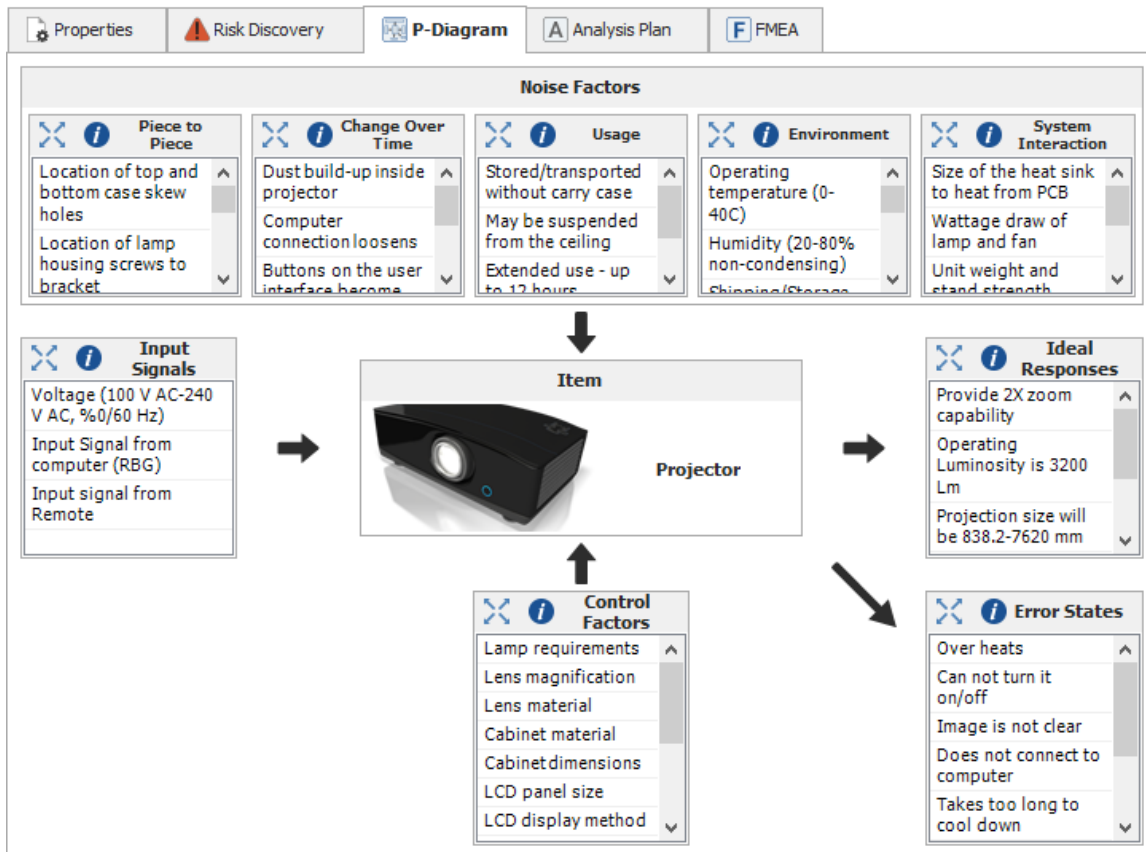
Reset Assumptions from Library

Save Assumptions in Library

Last Update Date: 9/27/2019 1:55 PM User: User Name

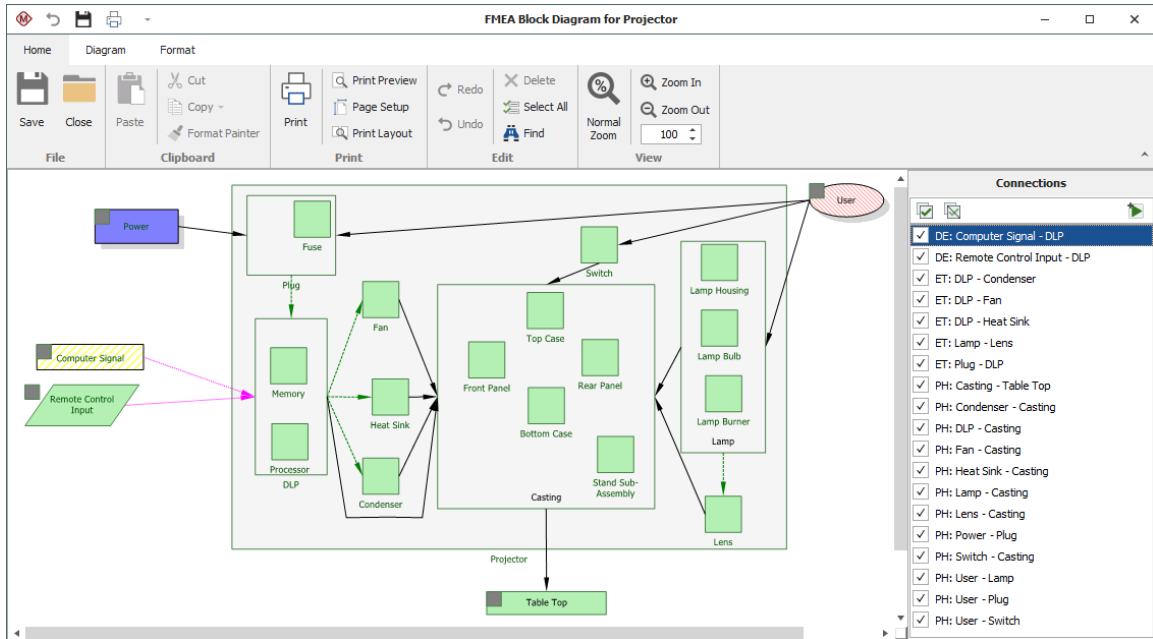
Parameter Diagrams (P-Diagrams)

A Parameter Diagram (P-Diagram) is a structured tool that identifies the inputs from a system and relates those inputs to the desired system outputs, while considering the controlled and uncontrolled factors.



FMEA Block Diagrams

An FMEA Block Diagram visually depicts the system assembly that will be analyzed in a Design FMEA. These diagrams help to define the scope of a particular analysis project and also may provide additional information that will be useful to the analysis team when they attempt to identify potential failure modes.



PFD Worksheets

A PFD worksheet records detailed information, including process characteristics (inputs) and product characteristics (outputs), for each step of the manufacturing or assembly process. The complete PFD worksheet provides a structure for preparing process FMEAs (PFMEAs) and control plans.

Properties		PFD Worksheet						
Op Seq Number	Operation Description	Operation Type	Symbol	Changeover	Class	Significant Product Characteristics (Outputs)	Class	Significant Process Characteristics (Inputs)
1.1.1	Front Door L.H. - Hang Process							
1.1.1.1	Remove door assembly from conveyor using fixture xyz & move to vehicle body	Move	○	P,T				
1.1.1.2	Align hinge attachment holes on door to body & finger start 4 bolts	Fab	◇					
1.1.1.3	Secure alignment fixture to opening & remove transfer fixture	Move	○	P,T				
1.1.1.4	Bring automatic bolt driver to assembly and drive 4 bolts	Fab	◇	T	C	Clamp load between hinge strap and hinge pillar	C	Bolt torque (4)
1.1.1.5	Remove bolt driver when cycle is complete	Move	○					

Control Plans

Control plans are used to track critical characteristics that must be kept in control during a manufacturing or assembly process, and record the methods for maintaining control.

Part/Process Number	Process Name/Operation Description	Machine, Device, Jig, Tools for Mfg	No.	Product	Process	Special Char. Class	Specification/Tolerance	Evaluation/Measurement Technique	Sample Size	Sample Frequency	Control Method	Reaction Plan
1	Op 70: Manual application of wax inside door. Cover inner door, lower surfaces with wax to specification thickness.	Wax Sprayer AB12345	1	Wax thickness.	Manually inserted spray head not inserted far enough.	S	Wax thickness must be between X and Y.	Instrument XY12345	10	per Hour	Variables check for film thickness.	Check the insertion of the spray head and re-apply wax to affected units.
							Wax must cover the entire surface of the door panel.	Visual	10	per Hour	Visual check for coverage.	Check the insertion of the spray head and re-apply wax to affected units.
			2		Spray head clogged because viscosity is too high, temperature is too low or pressure is too low.	S	Viscosity must be AA to BB. Temperature must be CC to DD. Pressure must be EE to FF.	Instrument PQ12345		At start-up and after idle periods.	Test spray pattern at start-up and after idle periods.	Spray head maintenance.
			3		Spray head deformed due to impact.	S	Full inspection and cleaning of the spray head.			Monthly	Preventive maintenance program to maintain heads.	
			4		Spray time insufficient.	S	Wax must cover the following critical areas: XXX, YYY and ZZZ.	Visual	10	per Hour	Lot sampling and visual check for coverage of critical areas.	Remind the operator of the appropriate spray time and re-apply wax to affected units.

Test Plans

A test plan displays a list of actions that describe specific tests that need to be performed.

#	Recommended Action(s)	Planned Start Date	Planned Completion Date	Actual Start Date	Actual Completion Date	Specification/Methodology
1	Design of Experiments (DOE) on wax thickness	9/13/2019	9/17/2019	9/13/2019	9/16/2019	Two Level Factorial DOE
2	Laboratory accelerated corrosion test	9/24/2019	9/24/2019			ALT Corrosion Test #AB123
3	Team evaluation using design aid buck and spray head	10/1/2019	10/1/2019			

End User License Agreement

Click Wrap Agreement at time of product installation

BY INSTALLING THIS SOFTWARE OR BY CLICKING THE “I ACCEPT” BUTTON AND ACCEPTING THIS LICENSE IN ACCORDANCE WITH SECTION D (LICENSE ACCEPTANCE PROCEDURES) YOU AGREE TO THE TERMS OF THIS LICENSE WHICH WILL BIND YOU, THE COMPANY ON WHOSE BEHALF YOU ARE ENTERING INTO THIS LICENSE AGREEMENT, AND ITS EMPLOYEES, AS APPLICABLE.

THIS LICENSE AGREEMENT IS A LEGAL AGREEMENT BETWEEN HOTTINGER BRUEL & KJAER UK LTD, A COMPANY INCORPORATED IN THE UNITED KINGDOM, WHOSE REGISTERED NUMBER IS 1589921 AND WHOSE REGISTERED OFFICE IS AT TECHNOLOGY CENTRE, ADVANCED MANUFACTURING PARK, BRUNEL WAY, CATCLIFFE, ROTHERHAM S60 5WG (THE “LICENSOR”) AND THE END USER LICENSEE OR ITS REPRESENTATIVE/AGENT AUTHORISED TO BIND THE END USER LICENSEE (REFERENCED HEREIN AS “YOU” OR “YOUR”).

PLEASE READ THIS CAREFULLY BEFORE USING THE SOFTWARE PRODUCT

A: BACKGROUND

THIS LICENSE AGREEMENT SHALL BE BETWEEN YOU AND THE LICENSOR REGARDLESS OF WHETHER YOU HAVE PURCHASED THE SOFTWARE PRODUCT DIRECTLY FROM THE LICENSOR OR AN AUTHORISED RESELLER AS SET OUT BELOW.

THE LICENSOR APPOINTS EXPERIENCED PROVIDERS OF SOFTWARE RESALE SERVICES WHO DISTRIBUTE THE SOFTWARE PRODUCT TO END USERS (“AUTHORISED RESELLER”). IF YOU HAVE PURCHASED THE SOFTWARE PRODUCT AND ANY ASSOCIATED SUPPORT AND MAINTENANCE SERVICES FROM AN AUTHORISED RESELLER, SUCH PRODUCTS AND SERVICES WILL BE PROVIDED DIRECTLY TO YOU BY THE RELEVANT AUTHORISED RESELLER AND ALL PAYMENTS SHALL BE MADE TO THE AUTHORISED RESELLER ON THE AUTHORISED RESELLER’S TERMS AND PRICES.

IF YOU HAVE PURCHASED THE SOFTWARE PRODUCT AND SUPPORT AND MAINTENANCE SERVICES DIRECTLY FROM THE LICENSOR, SUCH SUPPORT AND MAINTENANCE SERVICES WILL BE DEALT WITH IN A SEPARATE AGREEMENT

BETWEEN YOU AND THE LICENSOR AND ALL PAYMENTS WILL BE MADE TO THE LICENSOR AND GOVERNED BY THE LICENSOR'S TERMS OF SALE.

B: PROPERTY OF LICENSOR

THE LICENSOR, OR, WHERE APPLICABLE, THE RELEVANT MEMBER OF THE LICENSOR'S CORPORATE GROUP, IS THE ENTIRE LEGAL AND BENEFICIAL OWNER OF CERTAIN SOFTWARE PRODUCT(S) (THE "SOFTWARE PRODUCT") AS SET OUT IN THE QUOTATION OF INFORMATION, WHICH SHALL ALSO INCLUDE YOUR LICENSE KEY, SENT TO YOU BY EMAIL EITHER BY THE LICENSOR OR, IF YOU HAVE PURCHASED THE SOFTWARE PRODUCT FROM AN AUTHORISED RESELLER, BY THE AUTHORISED RESELLER ("QUOTATION"). THE LICENSOR IS WILLING TO GRANT YOU A LICENSE TO USE THE SOFTWARE PRODUCT ONLY IF YOU ACCEPT ALL THE TERMS AND CONDITIONS SET OUT BELOW.

C: LICENSE TO BE GRANTED

THE LICENSOR IS PROPOSING TO GRANT YOU ONE OF THE FOUR FORMS OF LICENSES IN RESPECT OF THE SOFTWARE PRODUCT. THE DETAILS OF EACH FORM OF LICENSE ARE SET OUT IN CLAUSES 2.1 AND 3 BELOW. THE FORM OF LICENSE THAT IS PROPOSED TO BE GRANTED TO YOU IS SET OUT IN THE QUOTATION. THE QUOTATION FORMS PART OF THE LICENSE AGREEMENT AND BY ACCEPTING THE TERMS OF THE LICENSE YOU ARE ACCEPTING THOSE TERMS IN THE QUOTATION. IF YOU HAVE NOT RECEIVED THE QUOTATION FROM EITHER THE LICENSOR OR FROM THE AUTHORISED RESELLER (IF YOU HAVE PURCHASED THE SOFTWARE PRODUCT FROM AN AUTHORISED RESELLER) AT THE DATE HEREOF OR IF ANY DETAILS WITHIN THE QUOTATION ARE INCORRECT THEN YOU SHOULD FOLLOW THE "LICENSE REJECTION PROCEDURES" SET OUT AT PARAGRAPH E BELOW AND IMMEDIATELY CONTACT THE LICENSOR OR THE AUTHORISED RESELLER (AS APPLICABLE).

D: LICENSE ACCEPTANCE PROCEDURES

BY CLICKING ON THE ACCEPTANCE BUTTON WHICH FOLLOWS THIS LICENSE AGREEMENT (MARKED "I ACCEPT") IN THE UI, YOU INDICATE ACCEPTANCE OF THIS LICENSE AGREEMENT AND THE LIMITED WARRANTY AND LIMITATION OF LIABILITY SET OUT IN THIS LICENSE AGREEMENT. SUCH ACCEPTANCE IS ON YOUR OWN BEHALF, IF YOU ARE AN INDIVIDUAL, AND ON BEHALF OF ANY CORPORATE ENTITY WHICH EMPLOYS YOU OR WHICH YOU REPRESENT

(“CORPORATE LICENSEE”) IN ENTERING INTO THIS LICENSE AND YOU WARRANT THAT YOU HAVE THE NECESSARY AUTHORITY TO BIND THE CORPORATE ENTITY IN THIS RESPECT OR THAT THE AUTHORISED REPRESENTATIVES OF THE CORPORATE ENTITY ARE AWARE OF YOUR ACCEPTANCE OF THIS AGREEMENT ON ITS BEHALF. IN THIS LICENSE AGREEMENT, “YOU” REFERS TO THE LICENSEE, ANY SUCH CORPORATE LICENSEE, OR BOTH, AS A COMMON SENSE INTERPRETATION OF THE RELEVANT SECTION DICTATES.

E: LICENSE REJECTION PROCEDURES

IF YOU DO NOT ACCEPT THESE TERMS AND CONDITIONS, YOU SHOULD NOT CLICK ON THE ACCEPTANCE BUTTON IN THE UI TO ACCEPT THE TERMS OF THE LICENSE AGREEMENT AND YOU SHOULD CANCEL THE INSTALLATION, DELETE THE SOFTWARE PRODUCT FROM YOUR COMPUTER AND PROMPTLY (AND IN ANY EVENT, WITHIN 14 DAYS OF RECEIPT) RETURN TO THE RESELLER (A) ANY MEDIA; AND (B) ANY OTHER ITEMS PROVIDED, THAT ARE PART OF THIS PRODUCT.

F: OTHER AGREEMENTS

IF THE LICENSOR HAS EXPRESSLY AGREED WITH YOU IN WRITING THAT YOUR USE OF THE SOFTWARE PRODUCT IS GOVERNED BY A PRIOR EXECUTED LICENSE AGREEMENT WITH THE LICENSOR, SUCH AGREEMENT SHALL APPLY INSTEAD OF THE FOLLOWING TERMS AND CONDITIONS TO THE EXTENT THAT THEY CONFLICT.

YOU SHOULD PRINT A COPY OF THIS LICENSE AGREEMENT FOR FUTURE REFERENCE.

LICENSE AGREEMENT

1. Ownership of Software Product and Copies

1.1 The Software Product and any printed materials or electronic documentation accompanying the Software Product (“**Documentation**”) are copyrighted works of authorship, and are also protected under applicable database laws. The Licensor, or, where applicable, the relevant member of the Licensor’s corporate group, retains ownership of the Software Product and all subsequent copies of the Software Product, regardless of the form in which the copies may exist. This License Agreement is not a sale of the original Software Product or any copies.

2. Commercial License

2.1 In consideration of You agreeing to abide by the terms of this License Agreement and payment of the applicable License fees either to the Licensor or, if You have purchased the Software Product from an Authorised Reseller, to the Authorised Reseller (as specified in the Quotation), the Licensor hereby grants to You a personal, non-exclusive, and (unless expressly agreed otherwise by the Licensor in accordance with clause 5.1) non-transferable License to use the Software Product and the Documentation on the terms of this License Agreement. The License shall take one of the following forms, and shall be set out in the Quotation:

(a) Annual License:

(i) Duration – this License shall continue for a period of 12 months (“Initial Period”) from the date of delivery of the Quotation (“the Delivery Date”) and, provided that You have paid all applicable renewal fees, from year to year thereafter unless terminated in accordance with any provision of clause 10 below or any other clause of this License Agreement.

(ii) Termination – You must give the Licensor 90 days’ written notice prior to the anniversary of the Delivery Date, such notice not to expire before such anniversary date.

(b) Perpetual License:

(i) Duration – this License shall continue for a period of 25 years from the Delivery Date unless terminated in accordance with any provision of clause 10 below or any other clause of this License Agreement.

(ii) Conversion – this License may be converted to a Token Based Annual License, upon application to either the Licensor or the Authorised Reseller (if You have purchased the Software Product from an Authorised Reseller), and payment of an additional fee to the Licensor or the Authorised Reseller (as applicable), which shall be additional to the fees paid or payable in respect of any maintenance and support services provided by either by the Licensor or the Authorised Reseller (if You have purchased the Software Product from an Authorised Reseller). You may reverse this conversion to the same terms as agreed in the Perpetual License at the anniversary of the conversion by giving the Licensor 90 days’ written notice prior to the anniversary of the Delivery Date, such notice not to expire before the anniversary of the Delivery Date.

(c) Token Based Annual License (referenced in the Quotation as a Prenscia Access System, CDS, CRS, or CDRS License):

(i) Subject to the terms and conditions of this License Agreement, You may access any of the Software Product in the Quotation at any one time and in any combination up to the number of subscriptions granting You access to the Software Product for simultaneous use by You and purchased by You pursuant to this Agreement (“Access Credits”). You may add additional Access Credits which shall be charged in accordance with either the Licensor’s prices or the Authorised Reseller’s prices (if You have purchased the Software Product from an Authorised Reseller). Such increase in Access Credits shall apply to the following 12 month period, unless You give the Licensor or the Authorised Reseller (as applicable) written notice at least 90 days in advance of the expiration of the Initial Period, that You do not wish to sustain such increase in Access Credits. You may opt to reduce the number of Access Credits with 90 days’ written notice in advance of the 12 month period following from the anniversary of the Delivery Date, provided that the total number of Access Credits does not fall below the minimum threshold set by the Licensor or the Authorised Reseller (as applicable) or below the initial number of Access Credits calculated at the time of conversion of any Perpetual License.

(ii) Duration – this License shall continue for the Initial Period and, provided that You have paid for the applicable Access Credits, from year to year thereafter unless terminated in accordance with any provision of clause 10 below or any other clause of this License Agreement.

(iii) Reporting – in order to serve the Licensor’s customers better, the Licensor needs to be able to understand how its customers use the Token Based Annual License. As a condition of Your continued access to the system, You are asked to provide to the Licensor on a quarterly basis, the log file. You will be provided with easy-to-follow instructions on how to do this.

(iv) Termination – You must give the Licensor 90 days’ written notice in advance of the expiration of the Initial Period of Your intention to discontinue the Token Based Annual License, such notice not to expire before the anniversary of the Delivery Date, and You must have submitted all reports required of You in clause 2.1(c)(iii) above. Failure to provide such notice and reports will mean that the License shall automatically continue on the same terms until terminated in accordance with this clause.

2.2 As an end user licensee of the Software Product, You may, subject to the following conditions and any conditions specified in the Quotation:

(a) use and copy the Software Product only for use on any computer system that is detailed in the release notes of the respective Software Product and which is licensed, leased and/or controlled by You (the Corporate Licensee) or any member of Your corporate group, which expression includes the Corporate Licensee's majority-owned subsidiaries, any parent

company having a majority- owned interest in the Corporate Licensee, and such parent's majority-owned subsidiaries;

(b) load the Software Product into and use it only on computers at the locations specified in the Quotation and which are under Your control; and

(c) copy the Software Product only for back-up and archival purposes and make up to three copies of the Documentation, provided that the original and each copy is kept in Your possession and that Your installation and use of the Software Product does not exceed any restrictions contained in the Quotation.

3. Demonstration License

3.1 If the Licensor has provided You with the Software Product free of charge for evaluation purposes, this clause 3 shall apply to Your use of the Software Product.

3.2 You may use the Software Product on a computer solely for the purposes of evaluating the Software Product.

3.3 The Software Product is provided to You free of charge and on an “AS IS” basis, without any technical support or warranty of any kind from the Licensor including, without limitation, a warranty of satisfactory quality, fitness for purpose and non-infringement.

3.4 This License shall continue for a period of 30 days from the Delivery Date unless terminated in accordance with any provision of clause 10 below or any other applicable clause of this License Agreement or until such License is converted into an Annual License, Perpetual License, or Token Based Annual License, if earlier.

3.5 As part of the Licensor’s testing and evaluation of the Software Product, You shall share with the Licensor the input and views received and any reports and analysis produced promptly upon receipt of such feedback.

3.6 Clauses 4, 5.1(a), 6.1(b), 6.1(f), 8.1, 8.2, 8.5, 10.1(a) of this License Agreement shall not apply to a Demonstration License.

4. Delivery and Risk

4.1 The Software Product shall consist of one copy of the object code of the Software Product on machine- readable form only, on the disk, dongle or other media on which the Software Product is delivered as described in the Quotation (the “Media”). Risk in the Media shall pass to You on delivery. If any part of the Media shall thereafter be lost, damaged or destroyed, You must contact either the Licensor or the Authorised Reseller from whom You have purchased the

Software Product who will arrange for a repair or replacement of such Media at a cost (if any) determined by the Licensor or the Authorised Reseller (as applicable).

5. License Restrictions

5.1 You may not nor permit others to:

- (a) transfer the Software Product from one location to another, without the express written consent of the Licensor and provided such transfers do not exceed two in any twelve-month period. It will be a condition of the grant of any such consent that the Software Product held on hard drives at the current location must be erased and You must enter into a new License agreement with the Licensor before a Software Product License key is provided to You. The administration charge (currently US \$1,500) will be payable by You in respect of such transfer. This charge is only applicable to end user licensees who do not have a support and maintenance services agreement with the Licensor or Authorised Reseller;
- (b) exceed the number of concurrent users specified in the Quotation, if any;
- (c) sub-License, sell, assign, rent, pledge, lease, transfer or otherwise dispose of the Software Product, on a temporary or permanent basis, without the prior written consent of the Licensor;
- (d) translate, reverse engineer, decompile, disassemble, modify or create derivative works based on the Software Product except as permitted by law;
- (e) make copies of the Software Product, in whole or part, except for back-up or archival purposes as permitted in this License Agreement;
- (f) use any back-up copy of the Software Product for any purpose other than to replace the original copy in the event that it is destroyed or becomes defective;
- (g) copy the Documentation (except as provided by this License Agreement);
- (h) adapt, modify, delete or translate the Documentation in any way for any purpose whatsoever;
- (i) vary, delete or obscure any notices of proprietary rights or any product identification or restrictions on or in the Software Product.

6. Open Source

Notwithstanding the foregoing provisions, You acknowledge that certain components of the Software Product may be covered by so-called open source software licenses (“Open Source Components”), which means any software licenses approved as open source licenses by the Open Source Initiative or any substantially similar licenses, including without limitation any license that, as a condition of distribution of the software licensed under such license, requires that the distributor make the software available in source code format. To the extent required by the licenses covering Open Source Components, the terms of such licenses will apply to such Open Source Components in lieu of the terms of this Agreement. To the extent the terms of the licenses applicable to Open Source Components prohibit any of the restriction in this License Agreement with respect to such Open Source Components, such restrictions will not apply to such Open Source Components. To the extent the terms of the licenses applicable to Open Source Components require Licensor to make an offer to provide source code or related information in connection with the Software Product, such offer is hereby made. Any request for source code or related information should be directed only to Customer Support, Hottinger Bruel & Kjaer UK LTD, AMP Technology Centre, Brunel Way, Catcliffe, Rotherham, South Yorkshire, S60 5WG, United Kingdom. You acknowledge receipt of notices for the Open Source Components for the initial delivery of the Software Product.

7. Undertakings

7.1 You undertake:

- (a) to ensure that, prior to the use of the Software Product by Your employees or agents, all such parties are notified of this License and the terms of this License Agreement and that any such use as aforesaid is in accordance with the terms of this License Agreement;
- (b) to replace the current version of the Software Product with any updated or upgraded version or new release provided by the Licensor or the Authorised Reseller (if applicable) under the terms of this License Agreement immediately on receipt of such version or release;
- (c) to use the Software Product only as described in the Documentation and subject to the restrictions as set out in clause 5 (License Restrictions above);
- (d) to reproduce and include the Licensor’s copyright notice (or such other party’s copyright notice as specified on the Software Product) on all and any copies of the Software Product, including any partial copies of the Software Product as permitted to be made under the terms of this License Agreement;

(e) to hold all drawings, specifications, data (including object and source codes), Software Product listings and all other information relating to the Software Product confidential and not at any time, during this License or after its expiration, disclose the same, whether directly or indirectly, to any third party without the Licensor's consent and

(f) to effect and maintain adequate security measures to safeguard the Software Product from access or use by any unauthorised person and indemnify the Licensor for losses flowing from your failure to do so.

8. Intellectual Property Rights

8.1 You acknowledge that all intellectual property rights in the Software Product and the Documentation throughout the world belong to the Licensor, that rights in the Software Product are licensed (not sold) to You, and that You have no rights in, or to, the Software Product or the Documentation other than the right to use them in accordance with the terms of this License Agreement.

8.2 You acknowledge that You have no right to have access to the Software Product in source code form or in unlocked coding or with comments.

8.3 The integrity of this Software Product is protected by technical protection measures ("TPM") so that the intellectual property rights, including copyright, in the software of the Licensor are not misappropriated. You must not attempt in any way to remove or circumvent any such TPM, nor to apply, manufacture for sale, hire, import, distribute, sell, nor let, offer, advertise or expose for sale or hire, nor have in Your possession for private or commercial purposes, any means whose sole intended purpose is to facilitate the unauthorised removal or circumvention of such TPM.

8.4 Licensor may make available to the Licensee access to various artificial intelligence (AI) tools as part of the licensed Software Product (including tools based on the solutions developed by third parties), as long as the Licensee has an active maintenance agreement or active License subscription. Such access to AI tools shall be provided by the Licensor solely to give additional assistance to the Licensee during the use of the Software Product features, and the Licensor reserves the right to alter or remove access to such additional service at any time. Notwithstanding the foregoing, provision of access to such AI tools shall be withdrawn by the Licensor if the Licensee's maintenance agreement or License subscription is lapsed or withdrawn.

9. Limited Warranty

Subject to the limitations and exclusions of liability below and providing the Software is used in accordance with the Documentation and on an operating system or computer for which it was designed, the Licensor warrants that (a) the Media on which the Software Product is furnished will be free from material defects under normal use for a period of 90 days from the date of delivery (the “Warranty Period”); and that (b) during the Warranty Period, the Software Product will, when properly used, perform substantially in accordance with the functions described in the Documentation; and (c) that the Documentation correctly describes the operation of the Software Product in all material respects.

9.1 If, within the Warranty Period, You notify the Licensor in writing of any defect or fault in the Software Product in consequence of which it fails to perform substantially in accordance with the Documentation, and such defect or fault does not result from You having amended the Software Product or used it in contravention of the terms of this License Agreement, the Licensor will, at its sole option, i) repair or replace the Software Product, provided that You make available all information that may be necessary to assist the Licensor in resolving the defect or fault, including sufficient information to enable the Licensor to recreate the defect or fault, or ii) terminate this License Agreement immediately by notice in writing to You and the Licensor will refund or if the Software Product has been purchased from an Authorised Reseller will procure that the Authorised Reseller shall refund; any of the fees paid as at the date of termination (less a reasonable sum in respect of Your use of the Software Product to the date of termination) on return of the Software Product and all copies thereof. The Licensor’s obligation under this clause 8.2 is subject to Your compliance with clause 6.1(b).

9.2 You acknowledge that the Software Product has not been developed to meet Your individual requirements and that it is therefore Your responsibility to ensure that the facilities and functions of the Software Product as described in the Documentation meet Your requirements.

9.3 You acknowledge that the Software Product may not be free of bugs or errors and You agree that the existence of any minor errors shall not constitute a breach of this License Agreement.

9.4 The Licensor shall not be liable under the said warranty above if the Software Product fails to operate in accordance with the said warranty as a result of any modification, variation or addition to the Software Product not performed by the Licensor or caused by any abuse, corruption or incorrect use of the Software Product, including use of the Software Product with equipment or other software which is incompatible.

9.5 All other conditions, warranties or other terms which might have effect or be implied or incorporated into this License Agreement or any collateral contract, whether by statute, common

law or otherwise, are hereby excluded, including, without limitation, the implied conditions, warranties or other terms as to satisfactory quality, fitness for purpose or the use of reasonable skill and care.

10. Exclusion of Liability

10.1 Nothing in this License Agreement shall limit or exclude the liability of either party for death or personal injury resulting from negligence, for fraud or for fraudulent misrepresentation.

10.2 Subject to clause 9.1, the Licensor shall have no liability for any losses or damages which may be suffered by You (or any person claiming under or through You), whether the same are suffered directly or indirectly or are immediate or consequential, and whether the same arise in contract, tort (including negligence) or otherwise howsoever, which fall within any of the following:

- (a) loss of income;
- (b) loss of business profits or contracts;
- (c) business interruption;
- (d) loss of the use of money or anticipated savings;
- (e) loss of information;
- (f) loss of opportunity, goodwill or reputation;
- (g) loss of, damage to or corruption of data; or
- (h) any indirect or consequential loss or damage of any kind howsoever arising and whether caused by tort (including negligence), breach of contract or otherwise;

provided that this clause 9.2 shall not prevent claims for loss of or damage to Your tangible property that fall within the terms of clause 8 or a claim for a refund of the License fees paid to the Licensor or the Authorised Reseller (as applicable) for the License of the Software Product.

10.3 Subject to clause 9.1 and clause 9.2, the Licensor's maximum aggregate liability under or in connection with this License Agreement, or any collateral contract, whether in contract, tort (including negligence) or otherwise, shall be limited to a sum equal to the fees paid by You to the Licensor or the Authorised Reseller (as applicable) for the License of the Software Product.

10.4 Subject to clause 9.1, clause 9.2 and clause 9.3, the Licensor's liability for infringement of third party intellectual property rights shall be limited to breaches of third party rights subsisting in the UK and USA.

10.5 This License Agreement sets out the full extent of the Licensor's obligations and liabilities in respect of the supply of the Software and Documentation. In particular, there are no conditions, warranties, representations or other terms, express or implied, that are binding on the Licensor except as specifically stated in this License Agreement. Any condition, warranty, representation or other term concerning the supply of the Software and Documentation which might otherwise be implied into, or incorporated in, this License Agreement, or any collateral contract, whether by statute, common law or otherwise, is hereby excluded to the fullest extent permitted by law.

10.6 If access to artificial intelligence (AI) tools is provided to the Licensee according to clause 8.4 hereof, the Licensor does not give to the Licensee any conditions, warranties, representations, or other terms, express or implied as to the results generated by such tools, their accuracy or correctness. It shall be the sole responsibility of the Licensee to read and comply with the terms and conditions of use of the relevant AI tools as communicated by the relevant AI solutions developer, as well as to check and validate the accuracy of any content generated from such AI tools.

11. Term and Termination

11.1 This License Agreement is effective for the period referred to in clause 2.1 or until otherwise terminated in accordance with that clause. The Licensor may terminate this License Agreement immediately by written notice to You if:

- (a) save in respect of a Perpetual License, if You purchase the Software Product directly from the Licensor, You fail to pay any renewal or other fees due by You to the Licensor in respect of this License Agreement;
- (b) You fail to comply with any provisions of this License Agreement;
- (c) You commit a material or persistent breach of this License Agreement which You fail to remedy (if remediable) within 14 days after the service on You of written notice requiring You to do so;
- (d) a petition for a bankruptcy order to be made against You has been presented to the court; or
- (e) where You, as the Corporate Licensee, become insolvent or unable to pay its (the company's) debts, enters into liquidation, whether voluntary or compulsory (other than for

reasons of bona fide amalgamation or reconstruction), passes a resolution for its winding-up, has a receiver or Administrator manager, trustee, liquidator or similar officer appointed over the whole or any part of its assets, makes any composition or arrangement with its creditors or takes or suffers any similar action in consequence of its debt, or becomes unable to pay its debts or ceases to trade.

11.2 In the event of termination in accordance with clause 10.1, You must immediately pay to the Licensor any sums due to the Licensor under the License Agreement and (at the Licensor's sole option) You must return, destroy or delete all copies of the Software Product from all storage media in Your control and, in the case of destruction, certify to the Licensor that You have done so.

12. Export

12.1 You will comply with all applicable laws, rules, and regulations governing export of goods and information, including the laws of the countries in which the Software Product was created. In particular, You will not export or re-export, directly or indirectly, separately or as a part of a system, the Software Product or other information relating thereto to any country for which an export License or other approval is required, without first obtaining such License or other approval.

13. General

13.1 You agree that the Licensor shall have the right, after supplying undertakings as to confidentiality, to audit any computer system on which the Software Product are installed in order to verify compliance with this License Agreement.

13.2 You agree that the Licensor may use Your company name in Licensor's customer lists and other promotional materials describing Your company as a customer or user of Licensor's software or services, as applicable, unless it receives written notice from You objecting to such use.

13.3 This License Agreement, its subject matter or its formation (including non-contractual disputes or claims) shall be governed by and construed in accordance with English law and submitted to the non-exclusive jurisdiction of the English courts.

13.4 This License Agreement constitutes the complete and exclusive statement of the agreement between the Licensor and You with respect to the subject matter of this License and supersedes all proposals, representations, understandings, and prior agreements, whether oral or written, and all other communications between the parties relating to that subject matter except for those expressly referred to in this License Agreement.

13.5 Any clause in this License Agreement that is found to be invalid or unenforceable shall be deemed deleted and the remainder of this License Agreement shall not be affected by that deletion.

13.6 Failure or neglect by either party to exercise any of its rights or remedies under this License Agreement will not be construed as a waiver of that party's rights nor in any way affect the validity of the whole or part of this License Agreement nor prejudice that party's right to take subsequent action.

13.7 This License Agreement is personal to You, and You may not assign, transfer, sub-contract or otherwise part with this License or any right or obligation under it without the Licensor's prior written consent.

13.8 In certain cases as indicated during installation, the Software Products track and store anonymized usage data so that Licensor can better understand how the Software Products are being used. This includes, but is not limited to, the following technical and statistic data: flow runs, file formats usage, help usage, crash statistics, etc. The information tracked and stored does not contain any identifying information for any of the users beyond a single machine-based identifier that Licensor does not track anywhere else. In addition, the tracking mechanism does not collect any proprietary information, but stores data relating to the usage of the Software or may communicate with computers controlled by Licensor in order to report such collected data. Where usage data is available to be tracked, there is a prompt during installation to opt out of this data collection and this can be turned on, or off, at any time within the software applications themselves within the standard user settings. Licensor shall not provide any of the information it gathers in connection with this tracking process to any third party, except as may be required by law or legal process.