

Implementation Guide



SEP

VERSION 2025

ReliaSoft

© 1992-2025 Hottinger Bruel & Kjaer UK Ltd ("HBK UK Ltd"), at Technology Centre, Advanced Manufacturing Park, Brunel Way, Catcliffe, Rotherham S60 5WG. HBK UK Ltd is an affiliate of Hottinger Bruel & Kjaer Inc. ALL RIGHTS RESERVED.

This license agreement ("License Agreement") sets forth the terms and conditions that govern the distribution and use of the HBK UK Ltd software documentation (the "HBK Software Documentation"), including any and all derivative works. Any unauthorized distribution or use of the HBK Software Documentation is strictly prohibited.

Licensee hereby acknowledges and agrees to the following terms and conditions of this License Agreement for its use of the HBK Software Documentation:

HBK UK Ltd grants the Licensee who accepts and abides by the terms of this License Agreement a non-exclusive, non-transferable, royalty-free, and revocable license to the HBK Software Documentation. Unless otherwise indicated, all HBK Software Documentation are copyrighted and are the property of HBK UK Ltd or, where applicable, the relevant member of HBK UK Ltd's corporate group. They are licensed to you and for your use only as an individual who has purchased the software ("Licensee"). Notwithstanding this License Agreement, the Licensee shall not have a license to the trademarks, logos, or any other intellectual property of HBK UK Ltd and/or its affiliates or Licensor(s).

Licensee may print a single copy of the HBK Software Documentation for his/her reference. Licensee may reprint the HBK Software Documentation, as needed, if the original printed copy is damaged and/or destroyed.

Except as provided above, no part of the HBK Software Documentation, either text or image, may be used for any purpose other than Licensee's own personal use and reference as a learning aid. Therefore, the reproduction, modification, creation of derivative works, storage in a retrieval system, or retransmission, in any form or by any means, electronic, mechanical or otherwise, for reasons other than Licensee's personal use, is strictly prohibited.

Certain photos and images in the HBK Software Documentation are used under non-transferable licenses obtained by HBK UK Ltd and/or its affiliates and are owned by its Licensor(s) ("Licensor"). Images depicting photos of actual persons are licensed to HBK UK Ltd and/or its affiliates and the signed model releases for these images are on file with the Licensor(s). HBK UK Ltd makes no copyright claims on these images. All ownership and intellectual property rights to the HBK Software Documentation are reserved by either HBK UK Ltd and/or its affiliates or its Licensor(s).

DISCLAIMER: THE HBK SOFTWARE DOCUMENTATION IS PROVIDED "AS IS" WITHOUT WARRANTIES OF ANY KIND, EITHER EXPRESS OR IMPLIED,

INCLUDING, BUT NOT LIMITED TO: 1) ANY IMPLIED WARRANTIES OF MERCHANTABILITY, FITNESS FOR A PARTICULAR PURPOSE, OR NON-INFRINGEMENT OF INTELLECTUAL PROPERTY; 2) ANY WARRANTY THAT THE HBK COURSE MATERIALS WILL CONFORM TO SPECIFICATIONS; 3) ANY WARRANTY THAT THE WORK WILL BE ERROR FREE OR VIRUS FREE. IN NO EVENT SHALL HBK UK LTD, ITS AFFILIATES, DISTRIBUTORS, CONTRACTORS, AGENTS, AND ITS LICENSOR(S) BE LIABLE FOR ANY DAMAGES, INCLUDING, BUT NOT LIMITED TO, DIRECT, INDIRECT, SPECIAL OR CONSEQUENTIAL DAMAGES, ARISING OUT OF, RESULTING FROM, OR IN ANY WAY CONNECTED WITH THE HBK SOFTWARE DOCUMENTATION, WHETHER OR NOT BASED UPON WARRANTY, CONTRACT, TORT, OR OTHERWISE, WHETHER OR NOT LOSS WAS SUSTAINED FROM, OR AROSE OUT OF THE RESULTS OF, OR USE OF, THE HBK SOFTWARE DOCUMENTATION. LICENSEES AGREE TO WAIVE ANY AND ALL CLAIMS AGAINST HBK UK LTD, ITS AFFILIATES, DISTRIBUTORS, CONTRACTORS, AGENTS, AND ITS LICENSOR(S), AND SHALL INDEMNIFY, DEFEND AND HOLD HARMLESS HBK UK LTD, ITS AFFILIATES, DISTRIBUTORS, CONTRACTORS, AGENTS, AND ITS LICENSOR(S) FOR ANY AND ALL LIABILITIES, CLAIMS, DEMANDS, DAMAGES, EXPENSES OR LOSSES THAT MAY ARISE FROM THE LICENSEE'S USE OR DISTRIBUTION OF THE HBK SOFTWARE DOCUMENTATION, INCLUDING ANY LIABILITIES OR DAMAGES FROM DERIVATIVE WORKS OR OTHER PRODUCTS BASED ON, OR RESULTING FROM, THE USE THEREOF.

This License Agreement is subject to change without notice and does not represent any commitment on the part of HBK UK Ltd and/or its affiliates to the Licensee, including any commitment to maintain or update the HBK Software Documentation. The names of companies, products, people, characters, and/or data mentioned in the HBK Software Documentation are not intended to represent any real individual, company, product or event, unless otherwise noted. Any rights not expressly granted herein are reserved for HBK UK Ltd.

TRADEMARKS:

ReliaSoft, Weibull++, BlockSim, Lambda Predict, XFMEA, RCM++ and XFRACAS are all trademarks of Hottinger Bruel & Kjaer Inc.

GlyphWorks, VibeSys, DesignLife and the nCode logos are all trademarks of HBK UK Ltd.

Other product names and services identified in the HBK Software Documentation are trademarks belonging to their respective trademark holders, and are used for illustration purposes. Their use in no way conveys an endorsement or other affiliation with HBK UK Ltd and/or its affiliates.

This License Agreement is subject to change without notice and does not represent any commitment on the part of HBK UK Ltd and/or its affiliates to the Licensee, including any commitment to maintain or update the HBK Software Documentation. The names of companies, products, people, characters, and/or data mentioned in the HBK Software Documentation are not intended to represent any real individual, company, product or event, unless otherwise noted. Any rights not expressly granted herein are reserved for HBK UK Ltd.

TABLE OF CONTENTS

GETTING STARTED 1

INSTALL THE APPLICATION 4

PERFORM POST-INSTALLATION TASKS, IF APPLICABLE 13

CONFIGURE IIS FOR ENHANCED SECURITY 24

END USER LICENSE AGREEMENT 31

Getting Started

IN THIS CHAPTER

Introduction	1
SEP Architecture and Requirements	2
Server Requirements	2
Client Requirements	2

Introduction

This guide describes how to implement ReliaSoft SEP by Hottinger Bruel & Kjaer Inc. for your organization. It covers tasks that typically require IT expertise.

After the SEP web portal is functional, you can manage users and configure various options via the SEP admin utility. This may require cooperation from an IT admin either to provide the application admin(s) access to run the SEP admin utility on the web server or to manage users and configure settings based on their business requirements. For information about these tasks, see [SEP Admin Utility - Manage Users](#) and [SEP Admin Utility - SEP Settings](#) in the SEP help.

Note: To view a web-based version of this guide, go to <https://help.reliasoft.com/sep25/ig/>.

We recommend that you read each of these topics sequentially and follow the instructions. In general, you will need to perform the following steps:

1. Prepare your database and web servers for your implementation.
 2. Install the web portal and activate your license.
 3. Create a ReliaSoft database, if you don't already have one that you'd like to use.
 4. Update the configuration file on the web server.
-

5. Perform various post-installation tasks, as necessary, to ensure that the application functions properly.
6. If desired, make configuration changes to IIS to improve security.

SEP Architecture and Requirements

SEP is a web-based application that serves the needs of engineering teams of any size. Based on the .NET Framework, it is designed to be n-tier, scalable, distributable, robust and able to be deployed across multiple servers or on a single computer.

Server Requirements

If you plan to host the database and website on the same server, you will need the following:

- Windows 2016 or newer
- .NET 4.8
- IIS with support for serving ASP.NET
- SQL Server 2014 (SP3) or newer OR Oracle 18c or newer

Client Requirements

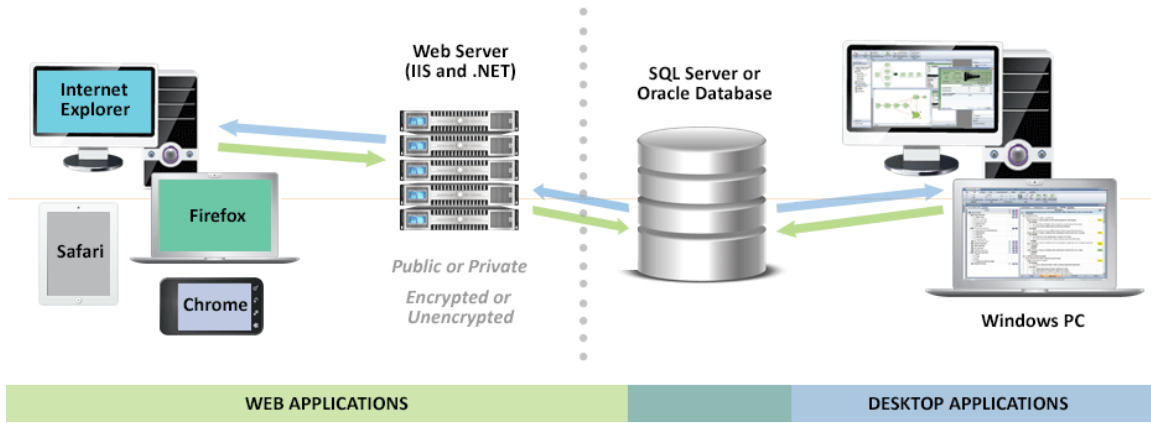
Once the website has been implemented, users can access it with any browser that supports the following doctype:

```
<!DOCTYPE html PUBLIC "-//W3C//DTD XHTML 1.0 Transitional//EN"  
    "http://www.w3.org/TR/xhtml1/DTD/xhtml1-transitional.dtd">
```

This includes most common browsers (such as Chrome, Safari and Firefox) that are available for Windows, Mac and tablet operating systems.

If the site is private (e.g., <http://InternalServer/SEP>), an application administrator may need to provide instructions for accessing the site on the internal network from mobile devices (e.g., via VPN or some other method).

These are the same requirements as for the XFRACAS failure reporting, analysis and corrective action system. Both applications can be deployed together on the same database and web server (s).



Install the Application

IN THIS CHAPTER

- Prepare the Database Server (SQL Server or Oracle) 4**
 - Setting up for SQL Server or Oracle 5
 - Replication and Backups 5

- Prepare the Web Server - IIS 5**
 - IIS Roles and Features 6
 - SSL Certificate 7

- Establish a Service Account for the Application (if Applicable) 8**

- Install the Application and Activate the License 8**

- Create the ReliaSoft Database (if Applicable) 9**
 - Plan for Your Implementation 9
 - Create or Upgrade the Database 10
 - Assign Roles in SQL Server for the Application Service Account 10

- Update the Configuration File 10**
 - 1 - On the Connection Tab: 11
 - 2 - On the Settings Tab: 11

Prepare the Database Server (SQL Server or Oracle)

The ReliaSoft desktop applications, XFRACAS and SEP are all designed to connect with the same database on either SQL Server or Oracle.

If you need to establish a new database, the following considerations apply for preparing the database server. Later, you will use the admin utility to either create the database or connect to an existing one. (See Create the ReliaSoft Database (if Applicable) and Update the Configuration File.)

Setting up for SQL Server or Oracle

SQL Server

- **Make sure you have the latest version of SQL Server running.** To do this, run the following query in Query Analyzer: “Select @@version”. This should return a value like “Microsoft SQL Server 2005 - 9.00.3042 (Intel X86)” or “Microsoft SQL Server 2008 R2 - 10.50.1617 (X64),” depending on which SQL Server service pack you have installed.
- **Make sure you know the SQL Server Name.** This is a local server name or IP address so the IIS machine with the .NET application can connect to the database. These instructions assume that you will use a default instance of SQL Server to host the ReliaSoft database (e.g., SERVERNAME). If not, you must specify the instance when you enter the server name (e.g., SERVERNAME\INSTANCENAME).

Oracle

For easier support, we recommend installing the SQL Worksheet (available with the Enterprise edition) or Oracle SQL Developer (free to download from the Oracle website).

Replication and Backups

XFRACAS, SEP and the ReliaSoft desktop applications cannot be deployed with bi-directional (peer-to-peer or merge) database replication. They are designed for use with a single back-end database and do not handle conflict detection and resolution. It may be possible to use a ReliaSoft database with uni-directional (transactional or snapshot) replication; however, this is likely to affect performance, and you must test to evaluate the impact in your particular situation. *This type of use is not recommended or supported by ReliaSoft.*

For the purpose of disaster recovery, we recommend establishing a regular schedule for database and transaction log backups and storing these backups in a location that is protected from potential failure of the application's database server. If an issue occurs, you can restore the most recent database backup (e.g., nightly) and then restore subsequent transaction logs up to the point right before the failure.

Prepare the Web Server - IIS

To prepare the web server prior to installing SEP, make sure the IIS Web Server role and services are installed. In addition, if applicable, prepare for SSL protection.

IMPORTANT: ReliaSoft web based software cannot be installed on a server that is being used as a domain controller (i.e., a server that has Active Directory or DNS services installed). Because of security issues, domain controllers should have limited software and roles installed on them and they should not be used as a webserver.

IIS Roles and Features

Install the Web Server (IIS) role (if it is not already installed) and make sure the following role services are also installed. (*Instructions follow this table for Windows 2022, 2019 and 2016.*)

	WINDOWS 2022/2019	WINDOWS 2016
Web Server		
Common HTTP Features		
Default Document	x	x
Directory Browsing	x	x
HTTP Errors	x	x
Static Content	x	x
HTTP Redirection	x	
Health and Diagnostics		
HTTP Logging	x	x
Custom Logging	x	x
Logging Tools	x	x
Request Monitor		x
Performance		
Static Content Compression	x	x
Dynamic Content Compression	x	x
Security		
Request Filtering	x	x
IP and Domain Restrictions	x	x
Windows Authentication	x	x

	WINDOWS 2022/2019	WINDOWS 2016
Application Development		
.NET Extensibility 4.7 or 4.8	x	
.NET Extensibility 4.5 or 4.6		x
Application Initialization	x	x
ASP.NET 4.7 or 4.8	x	
ASP.NET 4.5 or 4.6		x
ISAPI Extensions	x	x
ISAPI Filters	x	x
Management Tools		
IIS Management Console	x	x

Note that if you do not already have the required version of the .NET Framework installed, you will need to have the operating system installation media available when you install the Web Server (IIS role). The required file is in the sources/sxs folder.

1. Open the Server Manager.
2. Click the **Manage** menu, choose **Add Roles and Features** and proceed through the wizard.
3. On the Server Roles page, select **Web Server (IIS)**.
 - a. If the role is already installed, expand the node, review the services that are already installed and select additional services if applicable.
 - b. If the role is not already installed, accept any prompts to install required features and proceed to the **Web Server (IIS) > Role Services** page, where you can select the services you need to install.
4. At the end of the wizard, click **Install**.

SSL Certificate

If you want the website to use HTTPS for secure communication (SSL/TLS), you must have a digital certificate. Later, you will use this certificate to create the binding for the site. (See [Enable HTTPS for Secure Communication](#).)

If you don't purchase a third-party certificate, you can create your own via another method, such as by generating a self-signed certificate using IIS Manager or using the Active Directory Certificate Services role installed on the server.

Establish a Service Account for the Application (if Applicable)

If the database is on SQL Server, we recommend establishing a service account (e.g., "RSUser") that SEP will use to connect to the ReliaSoft database as well as any other external databases that may be used to create "custom connection" dashboards in the [Reliability Data Warehouse \(RDW\)](#). This account must meet several requirements:

- It must be an Active Directory account.
- Ideally, it should have a password that does not expire (recommended).
- If the database is on SQL Server, a user should be assigned to a public server role, with at least the **db_datareader** and **db_datawriter** roles for the ReliaSoft database. *(If the database does not yet exist, you will need to add the roles via SQL Server after you create it. See [Create the ReliaSoft Database](#).)*
- It should have at least the **db_datareader** role for any other SQL Server databases that will be used by RDW custom connections.

If you plan to use this account as a database connection for **Open** buttons, it must also meet the requirements for an "impersonation user" for all computers that will run desktop applications — specifically, it must be on a trusted domain and it cannot be a local admin, domain admin or member of any Windows admin group (see [Configure Remote ReliaSoft](#)).

Alternatively, you can establish a separate impersonation account for the application admin to use for **Open** buttons only. For details on other options to configure the database connection for **Open** buttons, see [SEP Admin Utility - SEP Settings Window](#) in the SEP help.

Install the Application and Activate the License

After you have prepared the database and web server(s), you can log in to the web server as an administrator and perform the following steps. User Account Control (UAC) can either be left on or turned off for this installation.

1. Run the SEP setup (e.g., SEP25.exe) and follow the steps in the wizard to create the website and install the activation and admin tools.
2. From **Start**, search for “SEP 2025 Activation” then run the product activation tool and follow the steps to activate your license.

The license will be registered to a specific e-mail address, which will receive the notification required to activate it. This will be the same address for all stages of license usage from development/staging to production. Choose an address that can be accessed by someone who changes the hardware on the server. If the hardware changes for any reason, the license must be reactivated to get SEP back up and running.

Create the ReliaSoft Database (if Applicable)

If you already have a database that the website will use, skip ahead to [Update the Configuration File](#).

Plan for Your Implementation

To create a new ReliaSoft database, you’ll need to run the SEP admin utility (which resides on the web server) from a Windows user account that has the following permissions:

- For SQL Server implementations, you must be able to create objects under the default database owner (dbo) schema. Be prepared to specify the server and database names.
- For Oracle implementations, you must be able to create a database. Be prepared to specify a port, host, service name, schema and password.

Note: If you are using Oracle 19c with a pluggable database (PDB), the service name must be fully qualified — e.g., [PDBName].[db_domain].

Created Admin Accounts

During this process, the admin utility automatically creates two new user accounts for you — one for SEP and ReliaSoft desktop applications and another for XFRACAS — that use your Windows login and provide full admin permissions for those applications. The XFRACAS account is a special, IT/admin-only account for tasks such as updating database tables, rolling out new permissions to other admin users, performing bulk data imports (so imported records are not assigned to a specific user), etc. It is invisible to regular users and does not count against the number of users allowed by your XFRACAS license.

Future Upgrades and Ongoing IT / Maintenance Tasks

We recommend performing upgrades and ongoing IT/admin tasks from the same Windows account that you used to create the database (which, by default, has the database permissions required for all ReliaSoft applications). If you cannot identify a single person in your organization who will be available to perform these tasks — both now and in the future — we recommend establishing a shared service account for this purpose.

Note that, even if you created the database from a personal user account, you can still create a shared account to use for future upgrades:

- For SEP and desktop applications, use the admin utility to create additional accounts that are assigned to the “admin” security group.
- For XFRACAS, use the website’s **Admin** tools (**Admin > Configure > Security > Users**) to change the domain\username of the account that was created automatically.

Instructions for upgrading SEP are provided in the Install Update guide that comes with your upgrade package.

Create or Upgrade the Database

1. Log in to Windows with an appropriate account for your implementation. (Alternatively, you can run the admin utility as that account in step 2).
2. From **Start**, search for “SEP 2025 Admin” and open the admin utility.
3. Click either **New Enterprise Database** or **Upgrade Enterprise Database** and enter the details required to create or upgrade the database.

Assign Roles in SQL Server for the Application Service Account

Finally, if you created a new database on SQL Server, you must make sure the application service account (i.e., the account that the application will use to connect to the database) has the required roles assigned in SQL Server. For requirements, see [Establish a Service Account for the Application](#).

Update the Configuration File

After you have installed the website, activated the license and established a database, the next step is to update the configuration file on the web server.

From **Start**, search for "SEP2025 Admin" and open the admin utility. Then click **Update SEP Configuration File**.

IMPORTANT: Incorrect settings on either tab of this window can cause problems connecting to the database. If you encounter errors such as "There's a problem with the page you requested" when connecting to the website or errors stating that "an error occurred during the login process" when performing admin tasks, double-check all settings on both tabs.

1 - On the Connection Tab:

- **Connection Info** - Enter the required details for the database that the application will connect to. If you used the admin utility to create the database, the connection information will appear in the fields automatically.
-

Note: If you are configuring SEP for use with an Oracle database, you must specify a valid service name. Entering an SID may result in slow performance.

Select **Encrypt Connection String** if you want to hide the connection string information within the web configuration file.

- **User Impersonation (SQL Server)** - If the database is on SQL Server, enter the credentials that SEP will use to connect. For requirements, see [Establish a Service Account for the Application](#).

Select **Encrypt Impersonation Identity** if you want to hide the credentials within the web configuration file.

2 - On the Settings Tab:

- **Request timeout** sets how long IIS waits for a request to the application to finish processing. Typically, this will not need to be changed for an SEP implementation.
- **Content-Security-Policy Header** determines which types of dynamic resources are allowed to load on the site. This policy is required to detect and prevent cross-site scripting (XSS) and other code-injection attacks. Typically, it will not need to be changed; however, if you decide to modify this policy, you must include the following directives to ensure that the site functions properly:
 - `'unsafe-inline'`
 - `'unsafe-eval'`
 - `img-src 'self' data:`

- If a Secure Socket Layer (SSL) certificate has been implemented for SEP, select **Yes** for **HTTP Cookies Require SSL** if you also want the browser cookies to require SSL (an additional level of security).
- For a SQL Server implementation,
 - a. Select **Encrypt communication** to encrypt the connection between the application and the database. Do not select this option if the database server does not support an encrypted connection. If you do so, you will not be able to connect to the database server and you will receive an error when trying to do so. Note that starting in Version 2024, this option is selected by default.
 - b. Select **Trust server certificate** if the server has a self-signed certificate.

Note: To encrypt the connection for an Oracle implementation, set the encryption type to either "requested" or "required" for the Oracle database. To learn more, consult the Oracle documentation (e.g., https://docs.oracle.com/cd/B19306_01/network.102/b14268/asoconfig.htm#i1007808).

Perform Post-installation Tasks, if Applicable

IN THIS CHAPTER

Set up User Accounts and Permissions	13
Start the ReliaSoft Service	14
Create an Application Pool Identity	15
Release and Recycle Memory	15
Enable HTTPS for Secure Communication	16
Enable HTTPS	16
Enable TLS 1.2 Protocol for HTTPS	16
Enable Opening Analyses in ReliaSoft Desktop Applications	18
Enabling the Use of Locally Installed Software	18
Enabling the Use of Remotely Installed Software	20
Configure Remote ReliaSoft	20

Set up User Accounts and Permissions

After the database has been created, you can use any of the desktop applications or the SEP admin tool to create user accounts and set access permissions. You must create an account for anyone who will be able to edit or view data in the ReliaSoft desktop applications or SEP. (User accounts for XFRACAS are managed separately.)

- In the SEP admin tool on the web server, click the **Manage Users** button.
- In the ReliaSoft desktop applications (e.g., Weibull++, XFMEA, etc.), first open the database and then **choose File > Manage Database > Users and Security**.

If your organization uses Microsoft Active Directory, you can save time by importing user information from the directory to create the user accounts. Active Directory authentication

should be configured to lock accounts if incorrect passwords are entered a certain number of times, in accordance with your organization's best practice for security settings.

For more information, consult the “[Security Options](#)” topics in the desktop application help files

After the accounts have been created, you can use the SEP admin utility running on the web server to specify which users can access SEP. (See [SEP Admin Utility - Manage Users](#) in the SEP help.)

Start the ReliaSoft Service

The ReliaSoft Service is an optional utility that is installed with SEP. If the application admin(s) want to use the service to send alerts for actions based on calendar date (e.g., when the action is due in *X* days), you will need to make sure the service is running on the web server. (*For instructions on how to configure the settings, see [SEP Admin Utility - SEP Settings](#) in the SEP help.*)

To start the ReliaSoft Service on the SEP web server:

1. From **Start**, search for “Services” and open the Services window.
2. In the list of local services, right-click **ReliaSoftService** and select **Properties**.
3. On the Log On page, enter the credentials for an account that the service can run as. We recommend using an account that does not expire, such as the application service account (see [Establish a Service Account for the Application](#)).
4. On the General page, set the **Startup type** to either **Automatic** or **Automatic (Delayed Start)**. Then click **Start**.

The current status of the service (Running, Not Running or Not Found) will be displayed on the SEP Admin page.

- By default, this service is configured to not run from 8 to 10 p.m. each day that can be used for routine database maintenance and backups (**StopProcessingTime** = 20:00:00 and **MinutesToHoldProcessing** = 120). To change these settings, edit serviceConfig.xml on the web server.
- By default, this file is installed in the “bin” folder for the SEP website (e.g., C:\inet-pub\wwwroot\SEP\bin).

Create an Application Pool Identity

The application admin(s) may determine that SEP needs to display RDW dashboards based on custom connections to external Access databases (or to external SQL Server databases if the ReliaSoft database is on Oracle). If so, you may wish to set a service account (e.g., “SynUser”) as the IIS application pool identity (see [Establish a Service Account for the Application](#)). This is not recommended if your website is public.

1. In the **Connections** pane of the IIS Manager, click **Application Pools**.
2. Right-click the website’s application pool and choose **Advanced Settings** on the shortcut menu.
3. For the **Identity** property, click the ... button to open the Application Pool Identity window. Select the **Custom account** option and click **Set** to open the Set Credentials window. Enter the account credentials (domain\username) for the service account and click **OK**.

Note: For Access databases with the *.accdb file type, the RDW dashboard can only be displayed if the database was created with the same version of Microsoft Office (32-bit or 64-bit) that is installed on the web server (for SEP) or on the individual user's computer (for ReliaSoft desktop applications). To ensure that the RDW dashboard will display regardless of which version of Microsoft Office is installed, use the *.mdb file type instead.

Release and Recycle Memory

For large systems or systems with a high transactional load, an “Out of Memory” error can occur when the request for pages exceeds the system’s capability to release and recycle the memory with the default IIS settings. The settings provided below will force IIS to recycle the memory usage and handle it better so that the “Out of Memory” error does not occur.

Note that overly aggressive settings can slow the response of the system. Typically, memory is recycled when the application pool and server are not busy. Forcing memory to recycle more often can consume processor cycle time when the application is still busy, thus slowing system performance. The following settings have been tested to prevent the error from occurring, while posing the minimum possible impact on performance.

1. In the **Connections** pane of the IIS Manager, click **Application Pools**.
2. Right-click the system’s application pool and choose **Recycling** on the shortcut menu.

3. In the Application Pool Recycling Settings window that appears, specify the following settings and then click **Next**:
 - In the **Fixed Intervals** area, select **Regular** time intervals and enter **1740**.
 - In the **Memory Based Maximums** area, select **Private memory usage** and enter **1,024,000**.
4. Select to log the following events and click **Finish**:
 - **Regular time intervals**
 - **Private memory usage**
 - **Unhealthy ISAPI**

Enable HTTPS for Secure Communication

Enable HTTPS

If you want to use HTTPS for secure communication (SSL/TLS) and you already have a certificate for the website (see "[SSL Certificate](#)"), do the following:

1. In the **Connections** pane of the IIS Manager, open the **Sites** node under the server name. Click the **Default Web Site**.
2. In the **Actions** area on the right side of the window, click the **Bindings** link and then click the **Add** button in the Site Bindings window that appears.
3. Add a site binding of type `https` and specify your digital certificate. Close the Site Bindings window.
4. Return to the Connections pane and click the SEP site.
5. Under IIS, double-click the **SSL Settings** icon. Select **Require SSL** and **Ignore**, then click **Apply**.

Enable TLS 1.2 Protocol for HTTPS

If you are using HTTPS for secure communication and you wish to enable TLS 1.2, the same protocol must be enabled for the database server, the web server and .NET on the web server. *(Also note that if you are using a digital certificate, it must be SHA-256 or higher.)*

If your web server and database server are both Windows 2016 or 2019, the TLS 1.2 protocol will be enabled by default. If both servers are Windows 2022, then TLS 1.2 and 1.3 will be enabled by default. If TLS 1.2 is not working, check the following registry keys:

Windows Registry Editor Version 5.0

```
[HKEY_LOCAL_
MACHINE\SYSTEM\CurrentControlSet\Control\SecurityProviders\SCH
ANNEL\Protocols]
```

```
[HKEY_LOCAL_
MACHINE\SYSTEM\CurrentControlSet\Control\SecurityProviders\SCH
ANNEL\Protocols\SSL 2.0]
```

```
[HKEY_LOCAL_
MACHINE\SYSTEM\CurrentControlSet\Control\SecurityProviders\SCH
ANNEL\Protocols\SSL 2.0\Client]
```

```
"DisabledByDefault"=dword:00000001
```

```
[HKEY_LOCAL_
MACHINE\SYSTEM\CurrentControlSet\Control\SecurityProviders\SCH
ANNEL\Protocols\TLS 1.0]
```

```
[HKEY_LOCAL_
MACHINE\SYSTEM\CurrentControlSet\Control\SecurityProviders\SCH
ANNEL\Protocols\TLS 1.0\Client]
```

```
"Enabled"=dword:00000000
```

```
[HKEY_LOCAL_
MACHINE\SYSTEM\CurrentControlSet\Control\SecurityProviders\SCH
ANNEL\Protocols\TLS 1.0\Server]
```

```
"Enabled"=dword:00000000
```

```
[HKEY_LOCAL_
MACHINE\SYSTEM\CurrentControlSet\Control\SecurityProviders\SCH
ANNEL\Protocols\TLS 1.1]
```

```
[HKEY_LOCAL_
MACHINE\SYSTEM\CurrentControlSet\Control\SecurityProviders\SCH
ANNEL\Protocols\TLS 1.1\Client]
```

```
"DisabledByDefault"=dword:00000000
```

```
[HKEY_LOCAL_
```

```
MACHINE\SYSTEM\CurrentControlSet\Control\SecurityProviders\SCH  
ANNEL\Protocols\TLS 1.1\Server]
```

```
"DisabledByDefault"=dword:00000000
```

```
[HKEY_LOCAL_  
MACHINE\SYSTEM\CurrentControlSet\Control\SecurityProviders\SCH  
ANNEL\Protocols\TLS 1.2]
```

```
[HKEY_LOCAL_  
MACHINE\SYSTEM\CurrentControlSet\Control\SecurityProviders\SCH  
ANNEL\Protocols\TLS 1.2\Client]
```

```
"DisabledByDefault"=dword:00000000
```

```
[HKEY_LOCAL_  
MACHINE\SYSTEM\CurrentControlSet\Control\SecurityProviders\SCH  
ANNEL\Protocols\TLS 1.2\Server]
```

```
"DisabledByDefault"=dword:00000000
```

Enable Opening Analyses in ReliaSoft Desktop Applications

When users view published analysis summaries and FMEAs in SEP, the Open buttons make it easy for them to open the full analysis in a relevant desktop application. This can be done in two ways:

- Using ReliaSoft desktop applications installed locally on the SEP user's computer.
- Using ReliaSoft desktop applications running on a remote server, eliminating the need to install the desktop software on each client computer.

These options are not mutually exclusive; you can make both available and allow the user to choose via the User Preferences page. For both methods, an enterprise database connection file will be created and an environment variable name for the connection file path will be specified.

Enabling the Use of Locally Installed Software

Create the Enterprise Database Connection File

The enterprise database connection file (*.rserp) contains all of the necessary information for connecting to the enterprise database. For users opening analyses with locally installed software, this file may be saved locally on their computers, or it may be accessed at a shared network location.

1. From Start, search for "SEP 2025 Admin" and open the admin utility.
2. Click **New Database Connection File** and enter the details required for the database, then click **OK**.
3. Specify a location to save the enterprise database connection file—this can be the intended permanent location, or you can subsequently copy the file for distribution—and click **Save**.
4. Create a password for the enterprise database connection file. This password will need to be shared with all users who use the connection file.

Specify an Environment Variable Name

The environment variable will be used in the locator links that point to specific analyses, so it is important that it matches here and on all users' machines. Refer to [Define the Environment Variable on the Remote Server](#).

1. In the admin utility, click **SEP Settings** and enter the details required for the database, then click **OK**.
2. On the Connection tab, under **Database connection for Open** buttons, enter an environment variable name or accept the default name, "SEPConnection."

Define the Environment Variable on User Computers

On each client computer:

1. If the enterprise database connection file was distributed, save it to a location of your choosing, then press **Shift** and right-click it and choose **Copy as Path**. If you are accessing it at a shared network location, access that location, press **Shift** and right-click the file and choose **Copy as Path**. In this latter case, you must access the location using the UNC pathname (e.g., \\SharedDrive\ReliaSoft\ConnectionFile1.rserp) and NOT using a mapped drive.
2. From Start, search for "env" and choose **Edit environment variables for your account**.
3. In the User variables section of the Environment Variables window, click **New**.
4. In the New User Variable window, enter the environment variable name created in the "Specify an Environment Variable Name" section, then paste the path that you copied in step 1 of this section as the variable value and click **OK**.
5. Restart the computer to ensure that the variable is recognized going forward.

Enabling the Use of Remotely Installed Software

Create the Enterprise Database Connection File

The enterprise database connection file (*.rserp) contains all of the necessary information for connecting to the enterprise database. For users opening analyses using software running on a remote server, this file will need to be placed in a location accessible to all users (i.e., any user accessing the software must have, at minimum, read permissions in the folder where the connection file is saved).

1. From Start, search for "SEP 2025 Admin" and open the admin utility.
2. Click **New Database Connection File** and enter the details required for the database, then click **OK**.
3. Specify a location to save the enterprise database connection file and click **Save**.
4. Create a password for the enterprise database connection file. This password will need to be shared with all users who use the connection file.

Specify an Environment Variable Name

The environment variable will be used in the locator links that point to specific analyses, so it is important that it matches here and on the remote ReliaSoft server.

1. In the admin utility, click **SEP Settings** and enter the details required for the database, then click **OK**.
2. On the Connection tab, under **Database connection for Open** buttons, enter an environment variable name or accept the default name, "SEPConnection."

Configure Remote ReliaSoft

Remote ReliaSoft allows you to configure SEP to run ReliaSoft desktop applications on one or more remote servers, eliminating the need to install and update software on each client computer. This section describes the minimum requirements for setting up the server(s) and generating a Remote Desktop connection file for Remote ReliaSoft.

Requirements

- A Windows server that can be configured with Microsoft Remote Desktop Services (RDS) and RDP RemoteApp, or multiple RDS servers and a “broker” that distributes the requests. When planning your hardware requirements, you can estimate the following typical memory requirements per application per session. For example, a server with 32 GB RAM could

support approximately 30 simultaneous ALTA users, or 100 simultaneous Lambda Predict users, and so on.

APPLICATION	ESTIMATED MEMORY REQUIREMENT PER SESSION (MB)
ALTA	1000
RGA	1000
Weibull++	900
BlockSim	500
XFMEA	400
RCM++	400
MPC	300
Lambda Predict	300

- Sufficient RDS license seats (purchased from your preferred Microsoft vendor).
- ReliaSoft desktop applications installed and kept up to date on the RDS server(s). Locally hosted licensing is recommended (token-based or floating). If you do not already have a locally hosted license server for ReliaSoft and nCode software, see instructions at <https://www.hbkworld.com/en/services-support/support/product-documentation/locally-hosted-licensing>.

Set Up the RDS Server(s) and Create a Remote Desktop Connection File

1. Note that this document provides partial instructions focused on the settings that will affect your ability to generate a Remote Desktop connection file that can be used within SEP. If you are not familiar with the steps required to install and configure RDS, you may need to consult documentation/support provided by Microsoft.
2. Install the ReliaSoft desktop applications and configure the locally hosted licensing.
3. In the Windows Server Manager, make sure the required RDS roles are installed:

WINDOWS 2016 OR 2012	WINDOWS 2008
Remote Desktop Session Host	Remote Desktop Session Host
Remote Desktop Connection Broker	Remote Desktop Services Manager
Remote Desktop Web Access	Remote App Manager

4. In Remote Desktop Session Host, configure your Remote Desktop license (CALs) and any other settings that are appropriate for your implementation.
5. Add the ReliaSoft Launcher as a published RemoteApp program.
 - In Windows 2016 or 2012, in the Windows Server Manager under Remote Desktop Services, create a Session Collection. In the collection, use Publish RemoteApp Programs and follow the wizard. In the Properties window, make sure **Parameters** is set to **Allow any command line parameters**.
 - In Windows 2008, follow the wizard in the RemoteApp Manager. Make sure **Arguments** is set to **Unrestricted**.
6. Create and save an *.rdp file that contains the connection information for the ReliaSoft Launcher.
 - In Windows 2016 or 2012, open RDWeb (e.g., <https://servername/RDWeb>) in a web browser (other than Internet Explorer) and save the connection file.
 - In Windows 2008, click the **Create .rdp File** link in the RemoteApp Manager.

Note: SEP will use the *.rdp file that you provide as a template, and it will add settings that allow the ReliaSoft Launcher to open a specific ReliaSoft application, project and analysis. If your RDS server is configured to use digital certificates, you may need to edit the file (in Notepad or another text editor) before uploading to SEP. Specifically, if a certificate was added to the end of the file, it must be removed.

Enable Remote ReliaSoft

Remote ReliaSoft is now ready to be enabled in the SEP admin utility. (See [SEP Admin Utility - SEP Settings](#) in the SEP help.)

Define the Environment Variable on the Remote Server

1. Open a Remote Desktop connection to the server hosting the ReliaSoft software.
2. Save a copy of the enterprise database connection file to a location accessible to all users (i.e., any user accessing the software must have, at minimum, read permissions in the folder where the connection file is saved).
3. Test that the connection file works by double-clicking it and opening any ReliaSoft application that your license covers. Note that when you are asked for the password, you have the option of remembering the password on the computer. This affects only the user account

that is currently logged in; each user will need to provide the password at least once (when using Open in SEP) and decide whether to save it for their account.

4. Once you have confirmed that the connection file works, press **Shift** and right-click the file and choose **Copy as Path**.
5. From Start, search for "env" and choose **Edit the system environment variables**.
6. On the Advanced tab of the System Properties window, click the **Environment Variables** button.
7. In the System variables section of the Environment Variables window, click **New**.
8. In the New System Variable window, enter the environment variable name you created in the "Specify an Environment Variable Name" section, then paste the path that you copied in step 4 of this section as the variable value and click **OK**.
9. Restart the remote server to ensure that the variable is recognized going forward.

Configure IIS for Enhanced Security

IN THIS CHAPTER

IIS Settings for OWASP	24
Web Server Default Welcome Page	25
Clickjacking: X-Frame-Options Header Missing	25
X Content-Type-Options Header Missing	25
OPTIONS Method Is Enabled	25
Microsoft IIS Version Disclosure	25
ASP .NET Version Disclosure	26
X-Powered-By Header	27
Cookie Missing HTTP Only and Secure Flags	28
Custom Errors	28
Default web.config Changes	29

IIS Settings for OWASP

This section provides recommendations to address issues that may be identified if you choose to scan your web server for Open Web Application Security Project (OWASP) security concerns.

For some of the issues listed here, you will need to install the URL Rewrite tool, available at <http://www.iis.net/downloads/microsoft/url-rewrite>.

- The tasks performed in the IIS Manager should be done at the default website level (i.e., in the Connections pane, open the **Sites** node under the server name and click **Default Web Site**).
- Alternatively, the model web.config code summarizes the changes made in the IIS Manager (see [Default web.config Changes](#)).

Note: If you make these changes directly in the web.config file in the root folder for your SEP website, you can skip the steps shown below in italics.

Web Server Default Welcome Page

From the wwwroot directory, remove iisstart.htm, welcome.png and the asp_client folder.

Clickjacking: X-Frame-Options Header Missing

1. In the IIS Manager Home page, double-click **HTTP Response Headers**.
2. In the **Actions** area, click **Add**. Enter **X-Frame-Options** as the name and **SAMEORIGIN** as the value.

X Content-Type-Options Header Missing

1. In the IIS Manager Home page, double-click **HTTP Response Headers**.
2. In the **Actions** area, click **Add**. Enter **X-Content-Type-Options** as the name and **nosniff** as the value.

OPTIONS Method Is Enabled

1. In the IIS Manager Home page, double-click **Request Filtering**.
2. On the **HTTP Verbs** tab, click **Allow Verb** in the **Actions** area and enter **Options** in the **Deny Verb** window.

Microsoft IIS Version Disclosure

1. In the following Registry key, create a dWORD entry, DisableServerHeader, and set its value to 1: HKLM\SYSTEM\CurrentControlSet\Services\HTTP\Parameters
2. In the IIS Manager Home page, double-click **URL Rewrite**.
3. In the **Actions** area, click **View Server Variables**, then click **Add** and enter **RESPONSE_SERVER** in the text box.
4. Add an outbound rule to rewrite the **RESPONSE_SERVER** server variable as blank.
 - a. In the **Actions** area, click **Back to Rules** and then click **Add Rule(s)**.
 - b. In the **Add Rule(s)** window, click **Blank rule** in the **Outbound rules** category and click **OK**.

c. Create the outbound rule using the following settings:

- Name: Response Server
- Precondition: None
- Matching scope: Server Variable
- Variable name: RESPONSE_SERVER
- Variable value: Matches the Pattern
- Using: Regular Expressions
- Pattern: .+
- Action type: Rewrite
- Action Properties:
 - Value: <leave this field empty>
 - Replace existing server variable value: Selected

ASP .NET Version Disclosure

1. In the IIS Manager Home page, double-click **URL Rewrite**.
2. In the **Actions** area, click **View Server Variables**, then click **Add** and enter **RESPONSE_X-ASPNET-VERSION** in the text box.
3. Add an outbound rule to rewrite the *RESPONSE_X-ASPNET-VERSION* server variable as blank.
 - a. In the **Actions** area, click **Back to Rules** and then click **Add Rule(s)**.
 - b. In the **Add Rule(s)** window, click **Blank rule** in the **Outbound rules** category and click **OK**.
 - c. Create the outbound rule using the following settings:
 - Name: x-ASPNet
 - Precondition: None
 - Matching scope: Server Variable
 - Variable name: RESPONSE_X-ASPNET-VERSION

- *Variable value: Matches the Pattern*
- *Using: Regular Expressions*
- *Pattern: .+*
- *Action type: Rewrite*
- *Action Properties:*
 - *Value: <leave this field empty>*
 - *Replace existing server variable value: Selected*

X-Powered-By Header

1. In the IIS Manager Home page, double-click **HTTP Response Headers**.
2. Select the **X-Powered-By** header and click **Remove**.
3. In the IIS Manager Home page, double-click **URL Rewrite**.
4. In the **Actions** area, click **View Server Variables**, then click **Add** and enter **RESPONSE_X-POWERED-BY** in the text box.
5. *Add an outbound rule to rewrite the RESPONSE_X-POWERED-BY server variable as blank.*
 - a. *In the Actions area, click **Back to Rules** and then click **Add Rule(s)**.*
 - b. *In the Add Rule(s) window, click **Blank rule** in the **Outbound rules** category and click **OK**.*
 - c. *Create the outbound rule using the following settings:*
 - *Name: X-Powered*
 - *Precondition: None*
 - *Matching scope: Server Variable*
 - *Variable name: RESPONSE_X-POWERED-BY*
 - *Variable value: Matches the Pattern*
 - *Using: Regular Expressions*
 - *Pattern: .+*

- *Action type: Rewrite*
- *Action Properties:*
 - *Value: <leave this field empty>*
 - *Replace existing server variable value: Selected*

Cookie Missing HTTP Only and Secure Flags

Note: This setting is configured by adding the following entry to the site-level or application-level web.config file:

```
<system.web>
  ...
  <httpCookies httpOnlyCookies="true" requireSSL="true" />
  ...
</system.web>
```

Important: This setting could cause errors in the application if the application is not running over an HTTPS connection. It is a recommended security practice to require the application to use an HTTPS connection. See [Enable HTTPS for Secure Communication](#) for details on configuring the application to use HTTPS. If you choose not to require HTTPS for the application, then you can use the setting below instead of the one above. However, you should be aware that using the setting below could cause security scanning tools to raise a warning about the use of insecure cookies:

```
<httpCookies httpOnlyCookies="true" requireSSL="false" />
```

Custom Errors

1. In the IIS Manager, open the Configuration Editor.
2. In the **Section** drop-down list, choose **system.web/customErrors**.
3. Set **Mode** to **RemoteOnly**.

Default web.config Changes

```
<?xml version="1.0" encoding="UTF-8"?>
<configuration>
  <system.web>
    <customErrors mode="RemoteOnly">
    </customErrors>
    <httpCookies httpOnlyCookies="true" requireSSL="true" />
  </system.web>
  <system.webServer>
    <httpProtocol>
    <customHeaders>
      <remove name="X-Powered-By" />
      <add name="X-Frame-Options" value="SAMEORIGIN" />
      <add name="X-Content-Type-Options" value="nosniff" />
    </customHeaders>
    </httpProtocol>
    <security>
      <requestFiltering>
        <verbs>
          <add verb="OPTIONS" allowed="false" />
        </verbs>
      </requestFiltering>
    </security>
    <rewrite>
      <outboundRules>
        <rule name="Response Server">
          <match serverVariable="RESPONSE_SERVER" pattern=".+" />
          <action type="Rewrite" />
        </rule>
        <rule name="X-Powered">
          <match serverVariable="RESPONSE_X-POWERED-BY" pattern=".+" />
          <action type="Rewrite" />
        </rule>
      </outboundRules>
    </rewrite>
  </system.webServer>
</configuration>
```

```
<rule name="x-ASPNet">
  <match serverVariable="RESPONSE_X-ASPNET-VERSION" pattern="." />
  <action type="Rewrite" />
</rule>
</outboundRules>
</rewrite>
</system.webServer>
</configuration>
```

End User License Agreement

Click Wrap Agreement at time of product installation

BY INSTALLING THIS SOFTWARE OR BY CLICKING THE “I ACCEPT” BUTTON AND ACCEPTING THIS LICENSE IN ACCORDANCE WITH SECTION D (LICENSE ACCEPTANCE PROCEDURES) YOU AGREE TO THE TERMS OF THIS LICENSE WHICH WILL BIND YOU, THE COMPANY ON WHOSE BEHALF YOU ARE ENTERING INTO THIS LICENSE AGREEMENT, AND ITS EMPLOYEES, AS APPLICABLE.

THIS LICENSE AGREEMENT IS A LEGAL AGREEMENT BETWEEN HOTTINGER BRUEL & KJAER UK LTD, A COMPANY INCORPORATED IN THE UNITED KINGDOM, WHOSE REGISTERED NUMBER IS 1589921 AND WHOSE REGISTERED OFFICE IS AT TECHNOLOGY CENTRE, ADVANCED MANUFACTURING PARK, BRUNEL WAY, CATCLIFFE, ROTHERHAM S60 5WG (THE “LICENSOR”) AND THE END USER LICENSEE OR ITS REPRESENTATIVE/AGENT AUTHORISED TO BIND THE END USER LICENSEE (REFERENCED HEREIN AS “YOU” OR “YOUR”).

PLEASE READ THIS CAREFULLY BEFORE USING THE SOFTWARE PRODUCT

A: BACKGROUND

THIS LICENSE AGREEMENT SHALL BE BETWEEN YOU AND THE LICENSOR REGARDLESS OF WHETHER YOU HAVE PURCHASED THE SOFTWARE PRODUCT DIRECTLY FROM THE LICENSOR OR AN AUTHORISED RESELLER AS SET OUT BELOW.

THE LICENSOR APPOINTS EXPERIENCED PROVIDERS OF SOFTWARE RESALE SERVICES WHO DISTRIBUTE THE SOFTWARE PRODUCT TO END USERS (“AUTHORISED RESELLER”). IF YOU HAVE PURCHASED THE SOFTWARE PRODUCT AND ANY ASSOCIATED SUPPORT AND MAINTENANCE SERVICES FROM AN AUTHORISED RESELLER, SUCH PRODUCTS AND SERVICES WILL BE PROVIDED DIRECTLY TO YOU BY THE RELEVANT AUTHORISED RESELLER AND ALL PAYMENTS SHALL BE MADE TO THE AUTHORISED RESELLER ON THE AUTHORISED RESELLER’S TERMS AND PRICES.

IF YOU HAVE PURCHASED THE SOFTWARE PRODUCT AND SUPPORT AND MAINTENANCE SERVICES DIRECTLY FROM THE LICENSOR, SUCH SUPPORT AND MAINTENANCE SERVICES WILL BE DEALT WITH IN A SEPARATE AGREEMENT

BETWEEN YOU AND THE LICENSOR AND ALL PAYMENTS WILL BE MADE TO THE LICENSOR AND GOVERNED BY THE LICENSOR’S TERMS OF SALE.

B: PROPERTY OF LICENSOR

THE LICENSOR, OR, WHERE APPLICABLE, THE RELEVANT MEMBER OF THE LICENSOR’S CORPORATE GROUP, IS THE ENTIRE LEGAL AND BENEFICIAL OWNER OF CERTAIN SOFTWARE PRODUCT(S) (THE “SOFTWARE PRODUCT”) AS SET OUT IN THE QUOTATION OF INFORMATION, WHICH SHALL ALSO INCLUDE YOUR LICENSE KEY, SENT TO YOU BY EMAIL EITHER BY THE LICENSOR OR, IF YOU HAVE PURCHASED THE SOFTWARE PRODUCT FROM AN AUTHORISED RESELLER, BY THE AUTHORISED RESELLER (“QUOTATION”). THE LICENSOR IS WILLING TO GRANT YOU A LICENSE TO USE THE SOFTWARE PRODUCT ONLY IF YOU ACCEPT ALL THE TERMS AND CONDITIONS SET OUT BELOW.

C: LICENSE TO BE GRANTED

THE LICENSOR IS PROPOSING TO GRANT YOU ONE OF THE FOUR FORMS OF LICENSES IN RESPECT OF THE SOFTWARE PRODUCT. THE DETAILS OF EACH FORM OF LICENSE ARE SET OUT IN CLAUSES 2.1 AND 3 BELOW. THE FORM OF LICENSE THAT IS PROPOSED TO BE GRANTED TO YOU IS SET OUT IN THE QUOTATION. THE QUOTATION FORMS PART OF THE LICENSE AGREEMENT AND BY ACCEPTING THE TERMS OF THE LICENSE YOU ARE ACCEPTING THOSE TERMS IN THE QUOTATION. IF YOU HAVE NOT RECEIVED THE QUOTATION FROM EITHER THE LICENSOR OR FROM THE AUTHORISED RESELLER (IF YOU HAVE PURCHASED THE SOFTWARE PRODUCT FROM AN AUTHORISED RESELLER) AT THE DATE HEREOF OR IF ANY DETAILS WITHIN THE QUOTATION ARE INCORRECT THEN YOU SHOULD FOLLOW THE “LICENSE REJECTION PROCEDURES” SET OUT AT PARAGRAPH E BELOW AND IMMEDIATELY CONTACT THE LICENSOR OR THE AUTHORISED RESELLER (AS APPLICABLE).

D: LICENSE ACCEPTANCE PROCEDURES

BY CLICKING ON THE ACCEPTANCE BUTTON WHICH FOLLOWS THIS LICENSE AGREEMENT (MARKED “I ACCEPT”) IN THE UI, YOU INDICATE ACCEPTANCE OF THIS LICENSE AGREEMENT AND THE LIMITED WARRANTY AND LIMITATION OF LIABILITY SET OUT IN THIS LICENSE AGREEMENT. SUCH ACCEPTANCE IS ON YOUR OWN BEHALF, IF YOU ARE AN INDIVIDUAL, AND ON BEHALF OF ANY CORPORATE ENTITY WHICH EMPLOYS YOU OR WHICH YOU REPRESENT

(“CORPORATE LICENSEE”) IN ENTERING INTO THIS LICENSE AND YOU WARRANT THAT YOU HAVE THE NECESSARY AUTHORITY TO BIND THE CORPORATE ENTITY IN THIS RESPECT OR THAT THE AUTHORISED REPRESENTATIVES OF THE CORPORATE ENTITY ARE AWARE OF YOUR ACCEPTANCE OF THIS AGREEMENT ON ITS BEHALF. IN THIS LICENSE AGREEMENT, “YOU” REFERS TO THE LICENSEE, ANY SUCH CORPORATE LICENSEE, OR BOTH, AS A COMMON SENSE INTERPRETATION OF THE RELEVANT SECTION DICTATES.

E: LICENSE REJECTION PROCEDURES

IF YOU DO NOT ACCEPT THESE TERMS AND CONDITIONS, YOU SHOULD NOT CLICK ON THE ACCEPTANCE BUTTON IN THE UI TO ACCEPT THE TERMS OF THE LICENSE AGREEMENT AND YOU SHOULD CANCEL THE INSTALLATION, DELETE THE SOFTWARE PRODUCT FROM YOUR COMPUTER AND PROMPTLY (AND IN ANY EVENT, WITHIN 14 DAYS OF RECEIPT) RETURN TO THE RESELLER (A) ANY MEDIA; AND (B) ANY OTHER ITEMS PROVIDED, THAT ARE PART OF THIS PRODUCT.

F: OTHER AGREEMENTS

IF THE LICENSOR HAS EXPRESSLY AGREED WITH YOU IN WRITING THAT YOUR USE OF THE SOFTWARE PRODUCT IS GOVERNED BY A PRIOR EXECUTED LICENSE AGREEMENT WITH THE LICENSOR, SUCH AGREEMENT SHALL APPLY INSTEAD OF THE FOLLOWING TERMS AND CONDITIONS TO THE EXTENT THAT THEY CONFLICT.

YOU SHOULD PRINT A COPY OF THIS LICENSE AGREEMENT FOR FUTURE REFERENCE.

LICENSE AGREEMENT

1. Ownership of Software Product and Copies

1.1 The Software Product and any printed materials or electronic documentation accompanying the Software Product (“**Documentation**”) are copyrighted works of authorship, and are also protected under applicable database laws. The Licensor, or, where applicable, the relevant member of the Licensor’s corporate group, retains ownership of the Software Product and all subsequent copies of the Software Product, regardless of the form in which the copies may exist. This License Agreement is not a sale of the original Software Product or any copies.

2. Commercial License

2.1 In consideration of You agreeing to abide by the terms of this License Agreement and payment of the applicable License fees either to the Licensor or, if You have purchased the Software Product from an Authorised Reseller, to the Authorised Reseller (as specified in the Quotation), the Licensor hereby grants to You a personal, non-exclusive, and (unless expressly agreed otherwise by the Licensor in accordance with clause 5.1) non-transferable License to use the Software Product and the Documentation on the terms of this License Agreement. The License shall take one of the following forms, and shall be set out in the Quotation:

(a) Annual License:

(i) Duration – this License shall continue for a period of 12 months (“Initial Period”) from the date of delivery of the Quotation (“the Delivery Date”) and, provided that You have paid all applicable renewal fees, from year to year thereafter unless terminated in accordance with any provision of clause 10 below or any other clause of this License Agreement.

(ii) Termination – You must give the Licensor 90 days’ written notice prior to the anniversary of the Delivery Date, such notice not to expire before such anniversary date.

(b) Perpetual License:

(i) Duration – this License shall continue for a period of 25 years from the Delivery Date unless terminated in accordance with any provision of clause 10 below or any other clause of this License Agreement.

(ii) Conversion – this License may be converted to a Token Based Annual License, upon application to either the Licensor or the Authorised Reseller (if You have purchased the Software Product from an Authorised Reseller), and payment of an additional fee to the Licensor or the Authorised Reseller (as applicable), which shall be additional to the fees paid or payable in respect of any maintenance and support services provided by either by the Licensor or the Authorised Reseller (if You have purchased the Software Product from an Authorised Reseller). You may reverse this conversion to the same terms as agreed in the Perpetual License at the anniversary of the conversion by giving the Licensor 90 days’ written notice prior to the anniversary of the Delivery Date, such notice not to expire before the anniversary of the Delivery Date.

(c) Token Based Annual License (referenced in the Quotation as a Prenscia Access System, CDS, CRS, or CDRS License):

(i) Subject to the terms and conditions of this License Agreement, You may access any of the Software Product in the Quotation at any one time and in any combination up to the number of subscriptions granting You access to the Software Product for simultaneous use by You and purchased by You pursuant to this Agreement (“Access Credits”). You may add additional Access Credits which shall be charged in accordance with either the Licensor’s prices or the Authorised Reseller’s prices (if You have purchased the Software Product from an Authorised Reseller). Such increase in Access Credits shall apply to the following 12 month period, unless You give the Licensor or the Authorised Reseller (as applicable) written notice at least 90 days in advance of the expiration of the Initial Period, that You do not wish to sustain such increase in Access Credits. You may opt to reduce the number of Access Credits with 90 days’ written notice in advance of the 12 month period following from the anniversary of the Delivery Date, provided that the total number of Access Credits does not fall below the minimum threshold set by the Licensor or the Authorised Reseller (as applicable) or below the initial number of Access Credits calculated at the time of conversion of any Perpetual License.

(ii) Duration – this License shall continue for the Initial Period and, provided that You have paid for the applicable Access Credits, from year to year thereafter unless terminated in accordance with any provision of clause 10 below or any other clause of this License Agreement.

(iii) Reporting – in order to serve the Licensor’s customers better, the Licensor needs to be able to understand how its customers use the Token Based Annual License. As a condition of Your continued access to the system, You are asked to provide to the Licensor on a quarterly basis, the log file. You will be provided with easy-to-follow instructions on how to do this.

(iv) Termination – You must give the Licensor 90 days’ written notice in advance of the expiration of the Initial Period of Your intention to discontinue the Token Based Annual License, such notice not to expire before the anniversary of the Delivery Date, and You must have submitted all reports required of You in clause 2.1(c)(iii) above. Failure to provide such notice and reports will mean that the License shall automatically continue on the same terms until terminated in accordance with this clause.

2.2 As an end user licensee of the Software Product, You may, subject to the following conditions and any conditions specified in the Quotation:

(a) use and copy the Software Product only for use on any computer system that is detailed in the release notes of the respective Software Product and which is licensed, leased and/or controlled by You (the Corporate Licensee) or any member of Your corporate group, which expression includes the Corporate Licensee's majority-owned subsidiaries, any parent

company having a majority- owned interest in the Corporate Licensee, and such parent's majority-owned subsidiaries;

(b) load the Software Product into and use it only on computers at the locations specified in the Quotation and which are under Your control; and

(c) copy the Software Product only for back-up and archival purposes and make up to three copies of the Documentation, provided that the original and each copy is kept in Your possession and that Your installation and use of the Software Product does not exceed any restrictions contained in the Quotation.

3. Demonstration License

3.1 If the Licensor has provided You with the Software Product free of charge for evaluation purposes, this clause 3 shall apply to Your use of the Software Product.

3.2 You may use the Software Product on a computer solely for the purposes of evaluating the Software Product.

3.3 The Software Product is provided to You free of charge and on an “AS IS” basis, without any technical support or warranty of any kind from the Licensor including, without limitation, a warranty of satisfactory quality, fitness for purpose and non-infringement.

3.4 This License shall continue for a period of 30 days from the Delivery Date unless terminated in accordance with any provision of clause 10 below or any other applicable clause of this License Agreement or until such License is converted into an Annual License, Perpetual License, or Token Based Annual License, if earlier.

3.5 As part of the Licensor’s testing and evaluation of the Software Product, You shall share with the Licensor the input and views received and any reports and analysis produced promptly upon receipt of such feedback.

3.6 Clauses 4, 5.1(a), 6.1(b), 6.1(f), 8.1, 8.2, 8.5, 10.1(a) of this License Agreement shall not apply to a Demonstration License.

4. Delivery and Risk

4.1 The Software Product shall consist of one copy of the object code of the Software Product on machine- readable form only, on the disk, dongle or other media on which the Software Product is delivered as described in the Quotation (the “Media”). Risk in the Media shall pass to You on delivery. If any part of the Media shall thereafter be lost, damaged or destroyed, You must contact either the Licensor or the Authorised Reseller from whom You have purchased the

Software Product who will arrange for a repair or replacement of such Media at a cost (if any) determined by the Licensor or the Authorised Reseller (as applicable).

5. License Restrictions

5.1 You may not nor permit others to:

- (a) transfer the Software Product from one location to another, without the express written consent of the Licensor and provided such transfers do not exceed two in any twelve-month period. It will be a condition of the grant of any such consent that the Software Product held on hard drives at the current location must be erased and You must enter into a new License agreement with the Licensor before a Software Product License key is provided to You. The administration charge (currently US \$1,500) will be payable by You in respect of such transfer. This charge is only applicable to end user licensees who do not have a support and maintenance services agreement with the Licensor or Authorised Reseller;
- (b) exceed the number of concurrent users specified in the Quotation, if any;
- (c) sub-License, sell, assign, rent, pledge, lease, transfer or otherwise dispose of the Software Product, on a temporary or permanent basis, without the prior written consent of the Licensor;
- (d) translate, reverse engineer, decompile, disassemble, modify or create derivative works based on the Software Product except as permitted by law;
- (e) make copies of the Software Product, in whole or part, except for back-up or archival purposes as permitted in this License Agreement;
- (f) use any back-up copy of the Software Product for any purpose other than to replace the original copy in the event that it is destroyed or becomes defective;
- (g) copy the Documentation (except as provided by this License Agreement);
- (h) adapt, modify, delete or translate the Documentation in any way for any purpose whatsoever;
- (i) vary, delete or obscure any notices of proprietary rights or any product identification or restrictions on or in the Software Product.

6. Open Source

Notwithstanding the foregoing provisions, You acknowledge that certain components of the Software Product may be covered by so-called open source software licenses (“Open Source Components”), which means any software licenses approved as open source licenses by the Open Source Initiative or any substantially similar licenses, including without limitation any license that, as a condition of distribution of the software licensed under such license, requires that the distributor make the software available in source code format. To the extent required by the licenses covering Open Source Components, the terms of such licenses will apply to such Open Source Components in lieu of the terms of this Agreement. To the extent the terms of the licenses applicable to Open Source Components prohibit any of the restriction in this License Agreement with respect to such Open Source Components, such restrictions will not apply to such Open Source Components. To the extent the terms of the licenses applicable to Open Source Components require Licensor to make an offer to provide source code or related information in connection with the Software Product, such offer is hereby made. Any request for source code or related information should be directed only to Customer Support, Hottinger Bruel & Kjaer UK LTD, AMP Technology Centre, Brunel Way, Catcliffe, Rotherham, South Yorkshire, S60 5WG, United Kingdom. You acknowledge receipt of notices for the Open Source Components for the initial delivery of the Software Product.

7. Undertakings

7.1 You undertake:

- (a) to ensure that, prior to the use of the Software Product by Your employees or agents, all such parties are notified of this License and the terms of this License Agreement and that any such use as aforesaid is in accordance with the terms of this License Agreement;
- (b) to replace the current version of the Software Product with any updated or upgraded version or new release provided by the Licensor or the Authorised Reseller (if applicable) under the terms of this License Agreement immediately on receipt of such version or release;
- (c) to use the Software Product only as described in the Documentation and subject to the restrictions as set out in clause 5 (License Restrictions above);
- (d) to reproduce and include the Licensor’s copyright notice (or such other party’s copyright notice as specified on the Software Product) on all and any copies of the Software Product, including any partial copies of the Software Product as permitted to be made under the terms of this License Agreement;

(e) to hold all drawings, specifications, data (including object and source codes), Software Product listings and all other information relating to the Software Product confidential and not at any time, during this License or after its expiration, disclose the same, whether directly or indirectly, to any third party without the Licensor's consent and

(f) to effect and maintain adequate security measures to safeguard the Software Product from access or use by any unauthorised person and indemnify the Licensor for losses flowing from your failure to do so.

8. Intellectual Property Rights

8.1 You acknowledge that all intellectual property rights in the Software Product and the Documentation throughout the world belong to the Licensor, that rights in the Software Product are licensed (not sold) to You, and that You have no rights in, or to, the Software Product or the Documentation other than the right to use them in accordance with the terms of this License Agreement.

8.2 You acknowledge that You have no right to have access to the Software Product in source code form or in unlocked coding or with comments.

8.3 The integrity of this Software Product is protected by technical protection measures ("TPM") so that the intellectual property rights, including copyright, in the software of the Licensor are not misappropriated. You must not attempt in any way to remove or circumvent any such TPM, nor to apply, manufacture for sale, hire, import, distribute, sell, nor let, offer, advertise or expose for sale or hire, nor have in Your possession for private or commercial purposes, any means whose sole intended purpose is to facilitate the unauthorised removal or circumvention of such TPM.

8.4 Licensor may make available to the Licensee access to various artificial intelligence (AI) tools as part of the licensed Software Product (including tools based on the solutions developed by third parties), as long as the Licensee has an active maintenance agreement or active License subscription. Such access to AI tools shall be provided by the Licensor solely to give additional assistance to the Licensee during the use of the Software Product features, and the Licensor reserves the right to alter or remove access to such additional service at any time. Notwithstanding the foregoing, provision of access to such AI tools shall be withdrawn by the Licensor if the Licensee's maintenance agreement or License subscription is lapsed or withdrawn.

9. Limited Warranty

Subject to the limitations and exclusions of liability below and providing the Software is used in accordance with the Documentation and on an operating system or computer for which it was designed, the Licensor warrants that (a) the Media on which the Software Product is furnished will be free from material defects under normal use for a period of 90 days from the date of delivery (the “Warranty Period”); and that (b) during the Warranty Period, the Software Product will, when properly used, perform substantially in accordance with the functions described in the Documentation; and (c) that the Documentation correctly describes the operation of the Software Product in all material respects.

9.1 If, within the Warranty Period, You notify the Licensor in writing of any defect or fault in the Software Product in consequence of which it fails to perform substantially in accordance with the Documentation, and such defect or fault does not result from You having amended the Software Product or used it in contravention of the terms of this License Agreement, the Licensor will, at its sole option, i) repair or replace the Software Product, provided that You make available all information that may be necessary to assist the Licensor in resolving the defect or fault, including sufficient information to enable the Licensor to recreate the defect or fault, or ii) terminate this License Agreement immediately by notice in writing to You and the Licensor will refund or if the Software Product has been purchased from an Authorised Reseller will procure that the Authorised Reseller shall refund; any of the fees paid as at the date of termination (less a reasonable sum in respect of Your use of the Software Product to the date of termination) on return of the Software Product and all copies thereof. The Licensor’s obligation under this clause 8.2 is subject to Your compliance with clause 6.1(b).

9.2 You acknowledge that the Software Product has not been developed to meet Your individual requirements and that it is therefore Your responsibility to ensure that the facilities and functions of the Software Product as described in the Documentation meet Your requirements.

9.3 You acknowledge that the Software Product may not be free of bugs or errors and You agree that the existence of any minor errors shall not constitute a breach of this License Agreement.

9.4 The Licensor shall not be liable under the said warranty above if the Software Product fails to operate in accordance with the said warranty as a result of any modification, variation or addition to the Software Product not performed by the Licensor or caused by any abuse, corruption or incorrect use of the Software Product, including use of the Software Product with equipment or other software which is incompatible.

9.5 All other conditions, warranties or other terms which might have effect or be implied or incorporated into this License Agreement or any collateral contract, whether by statute, common

law or otherwise, are hereby excluded, including, without limitation, the implied conditions, warranties or other terms as to satisfactory quality, fitness for purpose or the use of reasonable skill and care.

10. Exclusion of Liability

10.1 Nothing in this License Agreement shall limit or exclude the liability of either party for death or personal injury resulting from negligence, for fraud or for fraudulent misrepresentation.

10.2 Subject to clause 9.1, the Licensor shall have no liability for any losses or damages which may be suffered by You (or any person claiming under or through You), whether the same are suffered directly or indirectly or are immediate or consequential, and whether the same arise in contract, tort (including negligence) or otherwise howsoever, which fall within any of the following:

- (a) loss of income;
- (b) loss of business profits or contracts;
- (c) business interruption;
- (d) loss of the use of money or anticipated savings;
- (e) loss of information;
- (f) loss of opportunity, goodwill or reputation;
- (g) loss of, damage to or corruption of data; or
- (h) any indirect or consequential loss or damage of any kind howsoever arising and whether caused by tort (including negligence), breach of contract or otherwise;

provided that this clause 9.2 shall not prevent claims for loss of or damage to Your tangible property that fall within the terms of clause 8 or a claim for a refund of the License fees paid to the Licensor or the Authorised Reseller (as applicable) for the License of the Software Product.

10.3 Subject to clause 9.1 and clause 9.2, the Licensor's maximum aggregate liability under or in connection with this License Agreement, or any collateral contract, whether in contract, tort (including negligence) or otherwise, shall be limited to a sum equal to the fees paid by You to the Licensor or the Authorised Reseller (as applicable) for the License of the Software Product.

10.4 Subject to clause 9.1, clause 9.2 and clause 9.3, the Licensor's liability for infringement of third party intellectual property rights shall be limited to breaches of third party rights subsisting in the UK and USA.

10.5 This License Agreement sets out the full extent of the Licensor's obligations and liabilities in respect of the supply of the Software and Documentation. In particular, there are no conditions, warranties, representations or other terms, express or implied, that are binding on the Licensor except as specifically stated in this License Agreement. Any condition, warranty, representation or other term concerning the supply of the Software and Documentation which might otherwise be implied into, or incorporated in, this License Agreement, or any collateral contract, whether by statute, common law or otherwise, is hereby excluded to the fullest extent permitted by law.

10.6 If access to artificial intelligence (AI) tools is provided to the Licensee according to clause 8.4 hereof, the Licensor does not give to the Licensee any conditions, warranties, representations, or other terms, express or implied as to the results generated by such tools, their accuracy or correctness. It shall be the sole responsibility of the Licensee to read and comply with the terms and conditions of use of the relevant AI tools as communicated by the relevant AI solutions developer, as well as to check and validate the accuracy of any content generated from such AI tools.

11. Term and Termination

11.1 This License Agreement is effective for the period referred to in clause 2.1 or until otherwise terminated in accordance with that clause. The Licensor may terminate this License Agreement immediately by written notice to You if:

- (a) save in respect of a Perpetual License, if You purchase the Software Product directly from the Licensor, You fail to pay any renewal or other fees due by You to the Licensor in respect of this License Agreement;
- (b) You fail to comply with any provisions of this License Agreement;
- (c) You commit a material or persistent breach of this License Agreement which You fail to remedy (if remediable) within 14 days after the service on You of written notice requiring You to do so;
- (d) a petition for a bankruptcy order to be made against You has been presented to the court; or
- (e) where You, as the Corporate Licensee, become insolvent or unable to pay its (the company's) debts, enters into liquidation, whether voluntary or compulsory (other than for

reasons of bona fide amalgamation or reconstruction), passes a resolution for its winding-up, has a receiver or Administrator manager, trustee, liquidator or similar officer appointed over the whole or any part of its assets, makes any composition or arrangement with its creditors or takes or suffers any similar action in consequence of its debt, or becomes unable to pay its debts or ceases to trade.

11.2 In the event of termination in accordance with clause 10.1, You must immediately pay to the Licensor any sums due to the Licensor under the License Agreement and (at the Licensor's sole option) You must return, destroy or delete all copies of the Software Product from all storage media in Your control and, in the case of destruction, certify to the Licensor that You have done so.

12. Export

12.1 You will comply with all applicable laws, rules, and regulations governing export of goods and information, including the laws of the countries in which the Software Product was created. In particular, You will not export or re-export, directly or indirectly, separately or as a part of a system, the Software Product or other information relating thereto to any country for which an export License or other approval is required, without first obtaining such License or other approval.

13. General

13.1 You agree that the Licensor shall have the right, after supplying undertakings as to confidentiality, to audit any computer system on which the Software Product are installed in order to verify compliance with this License Agreement.

13.2 You agree that the Licensor may use Your company name in Licensor's customer lists and other promotional materials describing Your company as a customer or user of Licensor's software or services, as applicable, unless it receives written notice from You objecting to such use.

13.3 This License Agreement, its subject matter or its formation (including non-contractual disputes or claims) shall be governed by and construed in accordance with English law and submitted to the non-exclusive jurisdiction of the English courts.

13.4 This License Agreement constitutes the complete and exclusive statement of the agreement between the Licensor and You with respect to the subject matter of this License and supersedes all proposals, representations, understandings, and prior agreements, whether oral or written, and all other communications between the parties relating to that subject matter except for those expressly referred to in this License Agreement.

13.5 Any clause in this License Agreement that is found to be invalid or unenforceable shall be deemed deleted and the remainder of this License Agreement shall not be affected by that deletion.

13.6 Failure or neglect by either party to exercise any of its rights or remedies under this License Agreement will not be construed as a waiver of that party's rights nor in any way affect the validity of the whole or part of this License Agreement nor prejudice that party's right to take subsequent action.

13.7 This License Agreement is personal to You, and You may not assign, transfer, sub-contract or otherwise part with this License or any right or obligation under it without the Licensor's prior written consent.

13.8 In certain cases as indicated during installation, the Software Products track and store anonymized usage data so that Licensor can better understand how the Software Products are being used. This includes, but is not limited to, the following technical and statistic data: flow runs, file formats usage, help usage, crash statistics, etc. The information tracked and stored does not contain any identifying information for any of the users beyond a single machine-based identifier that Licensor does not track anywhere else. In addition, the tracking mechanism does not collect any proprietary information, but stores data relating to the usage of the Software or may communicate with computers controlled by Licensor in order to report such collected data. Where usage data is available to be tracked, there is a prompt during installation to opt out of this data collection and this can be turned on, or off, at any time within the software applications themselves within the standard user settings. Licensor shall not provide any of the information it gathers in connection with this tracking process to any third party, except as may be required by law or legal process.